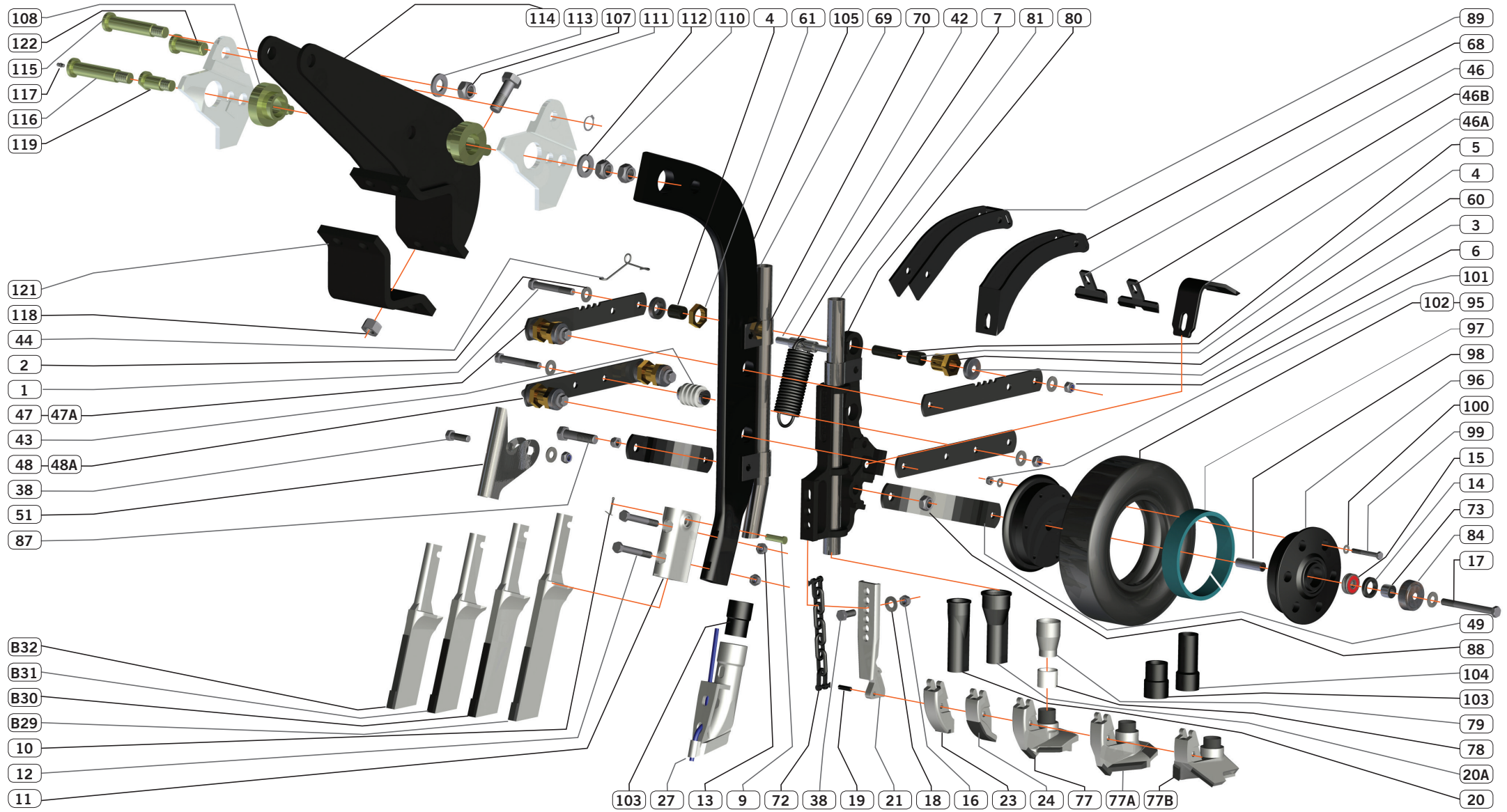


# EXPLODED DIAGRAM



# EXPLODED DIAGRAM

ITEM	NAME	PART #
1	BOLT M12 X 90 ZP	1-M12X90
2	FLAT WASHER M12	2-M12WF
3	SEAL CAP	3-GHSEAL
4	SHORT BUSH	4-GHSB
5	LONG BUSH	5-GHLB
6	NUT M12 CONELOCK	6-M12CONE
7	SPRING 5.6 X 42 X120	7-SP120
9	CLEVIS PIN	9-GH005
10	SPLIT PIN BAG OF 50	10-GHSPIN
11	KNIFE HOLDER	11-GH006
12	BOLT 1/2" -13 X 3 1/4"	12-G8 12 X3.14NC8B
13	NUT 1/2" UNC NYLOC	13-12NCNN
14	PRESS WHEEL DUST SEAL	14-GHPWSEAL
15	PRESS WHEEL BEARING	15-PWBJ
16	NUT 1/2 UNC PLAIN NUT	16-12NC8NBU
17	BOLT M12 X 150	17-M12X150
18	WASHER 1/2" SPRING ZP	18-12SQSW
19	ROLL PIN	19-GH010
20	PLASTIC SEED BOOT - 32 ID	20-GH32
20A	PLASTIC SEED BOOT - 42 ID	20A-GH42
21	WEAR SHOE HOLDER	21-GH012
23	WEAR SHOE 30MM WIDE	23-GH030
24	WEAR SHOE 30MM HD	24-GH030HD
27	FERTILISER BOOT	27-GH011
B29	9"KNIFE BUILT	B29-GH09
B30	8"KNIFE BUILT	B30-GH08
B31	7"KNIFE BUILT	B31-GH07
B32	6"KNIFE BUILT	B32-GH06
38	BOLT 1/2" X 1. 3/4 UNC	38-12X1.34NC8B
42	PIN SPRING HOLDER	42-PSH

43	GH STOPPER	43-STOPPER
44	RETAINING SPRING	44-RSPRING
45	SPRING	45-SSPRING
46	MUD SCRAPER 70MM S3	46-70SCRAPERV3
46A	MUD SCRAPER 70MM S2	46A-70SCRAPERV2
46B	MUD SCRAPER 90MM S3	46B-90SCRAPERV3
47	SIDE ARM UPPER (LONG)	47-ARMUP
47A	SIDE ARM UPPER (SHORT)	47A-ARMUPA
48	SIDE ARM LOWER (LONG)	48-ARMLOW
48A	SIDE ARM LOWER (SHORT)	48A-ARMLOWA
49	PRESS WHEEL ARM	49-PWARM
51	TRASH GUARD	51-GHTRASH
60	BUSH HOUSING	60-BHOUSING
61	BUSH HOUSING NUT	61-BHN
68	SCRAPER ARM S2 TINE	68-SAV2
69	GRANULAR FERT TUBE	69-GFT
70	FERT TUBE BRACKET	70-FTB
72	WEAR SHOE HOLDER CHAIN	72-WSHC
73	PRESSWHEEL SPACER	73-PWS
77	SPLITTER BOOT	77-SB80
77A	SPLITTER BOOT V2	77A-SB80V2
77B	INVERTED SPLITTER BOOT	77B-IV80
78	HEIGHT SLEEVE FOR SPLITTER BOOT	78-HS80
79	SEED FUNNEL FOR SPLITTER BOOT	79- F80
80	REAR CAST ARM	80-RCA
81	STAINLESS SEED TUBE	81-SST
84	PRESS WHEEL BEARING COVER	84-PWBC1
87	PRESS WHEEL BOLT- M16 X 70 2P	87-PWBOLT
88	PRESS WHEEL LOCK NUT M16 X ZP	88-PWLN
89	SCRAPER ARM S3 TINE	89-SAV3
94	STAINLESS SEED TUBE S3	94-SSTV3

95	PRESSWHEEL TYRE 300 X 70MM	95-PWT70
96	PRESS WHEEL HUB	96-PWH
97	RETAINING RING	97-RR
98	INTERNAL PRESSWHEEL SPACER	98-IPWS
99	BOLT M8X60MM	99-BM8X60
100	WASHER M8FLAT	100-WM8F
101	NUT M8 CONELOCK	101-NM8CL
102	PRESS WHEEL TYRE 300 X 120MM	102-PWT120
103	PLASTIC SLEEVE 60MM S3	103-PSV3
104	PLASTIC SLEEVE 100MM S2	104-PSV2
105	SHANK	105-SHK
106	SPACER FOR SB80V2	106-SFSB80
107	NUT - M20 - ZP - CONELOCK	107-M20CONE
108	BUSH ASSY - SHANK PIVOT	108-BASP
110	NUT - M24 - ZP - NYLOCK	110-M24NLOCK
111	BOLT M20 X 60 C10.9 ZP	111-M20X60
112	WASHER FLAT - M24 - ZP	112-WFM24
113	WASHER FLAT - M20 - ZP	113-WFM20
114	PIVOT BRACKET ASSY	114-PBA
115	PIN - JUMP CYL BASE	115-PJCB
116	PIN SHANK PIVOT	116-PSP
117	GREASE NIPPLE 1/4" BSW	117-GN
118	HEX NUT M20 C10.9 ZP	118-HNM20
119	PIN 25 X 64 SHANK PIVOT	119-P25X64
121	CLAMP PLATE - PIVOT BRACKET	121-CPPB
122	PIN 25X75 JUMP CYLINDER	122 - PJC25X75
125	ADAPTER PLATE S2	125 - APS2

THERE IS NO RELATIONSHIP BETWEEN GROUNDHOG INDUSTRIES AND AUSPLOW PTY LTD. AUSPLOW PTY LTD HAS NOT APPROVED THE USE OF GROUNDHOG INDUSTRIES PARTS ON ITS MACHINERY.