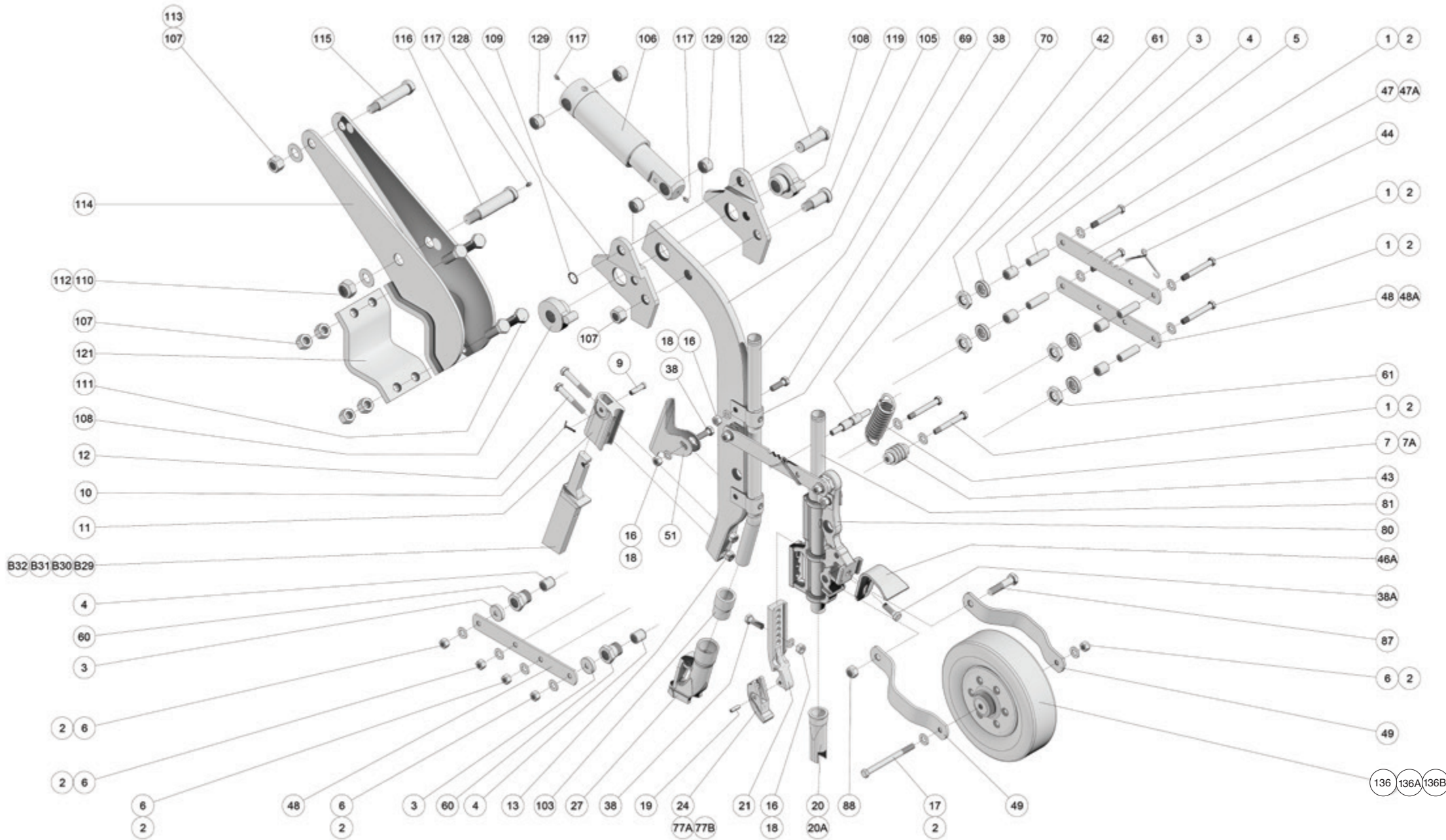


# EXPLODED DIAGRAM



THERE IS NO RELATIONSHIP BETWEEN GROUNDHOG INDUSTRIES AND AUSPLOW PTY.

# EXPLODED DIAGRAM

1	1-M12X90	BOLT M12 X 90 ZP	B31	B31-GH07	7"KNIFE BUILT REFER PAGE 3&4	106	106-HR70	HYDRAULIC RAM 70MM STROKE
2	2-M12WF	FLAT WASHER M12 ZP HARD	38	38-12X1.34NC8B	BOLT 1/2" X 1 3/4" UNC	107	107-M20CONE	NUT - M20 - ZP - CONELOCK
3	3-GHSEAL	SEAL CAP ZP HOUSING DUST SEAL	38A	38A-BOLT	BOLT FOR MUD SCRAPER 46A	108	108-BASP	BUSH ASSY - SHANK PIVOT
4	4-GHSB	SHORT BUSH SINTERED OIL IMPGD	42	42-PSH	PIN SPRING HOLDER	109	109-CPL	CHEEK PLATE LEFT
5	5-GHLB	LONG BUSH SINTERED OIL IMPGD	43	43-STOPPER	GH STOPPER	110	110-M24NLOCK	NUT - M24 - ZP - NYLOCK
6	6- M12CONE	NUT M12 CONELOCK	44	44-RSPRING	RETAINING SPRING	111	111-M20X60	BOLT M20 X 60 C10.9 ZP
7	7-SP120	SPRING 5.6 X 42 X120	46A	46A-70SCRAPERV2	MUD SCRAPER 70MM REFER PAGE 11	112	112-WFM24	WASHER FLAT - M24 - ZP
7A	7A-HDS	HD SPRING	47	47-ARMUP	SIDE ARM UPPER (LONG) REFER PAGE 15	113	113-WFM20	WASHER FLAT - M20 - ZP
9	9-GH005	CLEVIS PIN	48	48-ARMLOW	SIDE ARM LOWER (LONG) REFER PAGE 15	114	114-PBA	PIVOT BRACKET ASSY
10	10-GHSPIN	SPLIT PIN BAG OF 50	49	49-PWARM	PRESS WHEEL ARM	115	115-PJCB	PIN - JUMP CYL BASE
11	11-GH006	KNIFE HOLDER	51	51-GHTRASH	TRASH GUARD	116	116-PSP	PIN SHANK PIVOT
12	12-G8 12 X3.14NC8B -	BOLT 1/2" -13 X 3 1/4"	60	60-BHOUSING	BUSH HOUSING	117	117-GN	GREASE NIPPLE 1/4" BSW
13	13-12NCNN	NUT 1/2" UNC NYLOC	61	61- BHN	BUSH HOUSING NUT	118	118-VCR	VALVE CUSHION RETURN
16	16-12NC8NBU	NUT 1/2 UNC PLAIN NUT	69	69-GFT	GRANULAR FERT TUBE	119	119-P25X64	PIN 25 X 64 SHANK PIVOT
17	17- M12X150	BOLT M12 X 150	70	70-FTB	BRACKET FOR SEED OR FERT TUBE	120	120-CPAR	CHEEK PLATE ASSY RIGHT
18	18-12SQSW	WASHER 1/2" SPRING ZP	80	80- RCA	REAR CAST ARM - REFER PAGE 11	121	121-CPPB	CLAMP PLATE - PIVOT BRACKET
19	19-GH010	ROLL PIN REFER PAGE 6	81	81-SST	STAINLESS SEED TUBE RCA	122	122-PJC25X75	PIN 25X75 JUMP CYLINDER
20	20-GH32	PLASTIC SEED BOOT - 32 ID REFER PAGE 15	87	87- PWBOLT	PRESS WHEEL BOLT	128	128-CE	CIRCLIP EXTERNAL 25 X 1.2
21	21-GH012	WEAR SHOE HOLDER	88	88-PWLN	LOCK NUT	129	129-BSN	BUSH HYDRAULIC RAM
24	24-GH030HD	WEAR SHOE 30MM HD TUNGSTEN	103	103-PSV3	PLASTIC SLEEVE 60MM SERIES 3 REF. PAGE 10	136	136-BPW	BUILT PRESS WHEEL REFER PAGE 12
27	27-GH011	FERTILISER BOOT REFER PAGE 5	105	105-SHK	SHANK			