



R A I S I N G T H E B A R

SEEDING
CATALOGUE
2024

FULL BOAR

QUICK CHANGE KNIFE SYSTEM

- DESIGNED FOR 'C' SHANK CULTIVATORS WITH 1/2" BOLT HOLES
- LOW PROFILE DESIGN FOR SUPERIOR TRASH FLOW
- PROVISION FOR LIQUID FERTILISER TUBE
- COMPATIBLE WITH ALL AVAILABLE SEED BOOTS

To suit these leading brands:

flexi:coil **MORRIS**

Horwood Bagshaw



Ezee-On
TOUGH. DEPENDABLE. PERFORMANCE.

GASON



66-FB 66

Full Boar Holder
\$8.30 +GST



67-FB 67

Full Boar Knife
\$48.00 +GST

BOSS HOG

QUICK CHANGE KNIFE TO SUIT AGMASTER HOLDER

- DESIGNED FOR 'C' SHANK CULTIVATORS WITH 1/2" BOLT HOLES
- PROVISION FOR LIQUID FERTILISER TUBE
- COMPATIBLE WITH ALL AVAILABLE SEED BOOTS

To suit these leading brands:

flexi:coil **MORRIS**

Horwood Bagshaw



Ezee-On
TOUGH. DEPENDABLE. PERFORMANCE.

GASON



33-BHK 33

Boss Hog Knife
\$49.00 +GST



MORRIS WING & KNIFE

MORRIS

- TO SUIT MORRIS C2 CONTOUR DRILL
- KNIFE HAS AN EXTRA-LARGE 50MM X 13MM BLOCK OF TUNGSTEN TO PROLONG WEAR LI
- KNIFE HAS BEEN HARD FACED ON SIDES
- MORRIS WING HAS EXTRA-LARGE TUNGSTEN TILES ON WINGS TO PROLONG WEAR LIFE

58-MW120 58

Morris Wing
\$63.00 +GST



56-GHMC2 195MM 56

Morris Knife
\$69.00 +GST

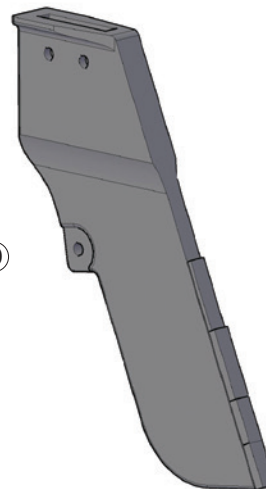
HEAVY DUTY 15MMX50MM TUNGSTEN BLOCK AVAILABLE

PRIMARY SALES KNIFE POINT

- TO SUIT PRIMARY PRECISION SEEDER BAR
- 170MM CARBIDE LEADING EDGE

150-PSK 150

PS Knife
\$87.40 +GST



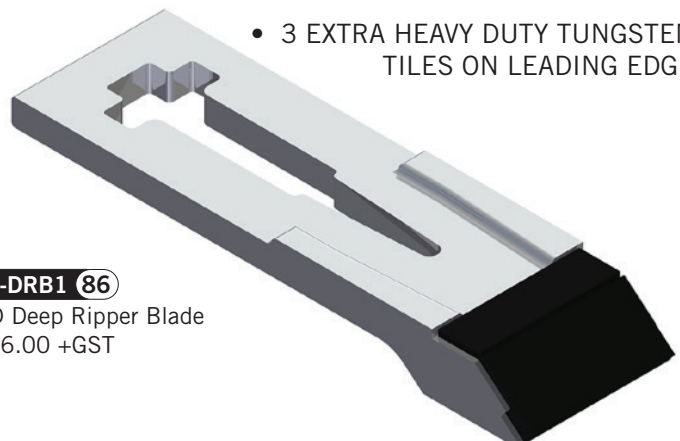
HD DEEP RIPPER BLADE

- REINFORCED CASTING ON LOWER AND UPPER EDGES
- EXCELLENT VALUE FOR MONEY COMPARED TO ORIGINAL OR REBUILT PART

- 3 EXTRA HEAVY DUTY TUNGSTEN TILES ON LEADING EDGE

86-DRB1 86

HD Deep Ripper Blade
\$86.00 +GST



THERE IS NO RELATIONSHIP BETWEEN GROUNDHOG INDUSTRIES AND AUSPLOW PTY.

BUSH KITS FOR PRECISION SEEDERS

Groundhog Industries have been supplying bush kits for precision seeding bars to the Australian agricultural industry for many years.

We use Chrome bar of various sizes to produce our pins, sourced from quality suppliers with the finest tolerance, cut to length and then machine threaded.

Our Bushes are made from the best available materials and machined to precision sizes and clearances to provide optimal fitment when installed.

Standard OEM bushes and pins often have larger tolerances / clearances between the bush and pin. They often use lesser quality materials, such as bolts instead of chrome pins and extruded bushes instead of machined, resulting in more play or slop within a Tyne assembly from new. This play results in premature wear and higher replacement costs over time.

Given the time and effort and cost to re-bush a seeding machine, it will save money over the long term by using better materials made to specification to suit the application.

OEM NO.

PRODUCT CODE

DESCRIPTION

QTY

BOURGALT PARALINK BUSH KIT - BPBUSHKIT



2131 - 17	BP - BUSH37MM	Bush Vesconite	4
2130 - 92 - 02	BP - BUSH60MM	Bush Vesconite	1
2130 - 93	BP - BUSH105MM	Bush Vesconite	1
9305 - 29 - 01	BP - HOUSING/BUSH	Housing & bush	2
2131 - 05	BP-BUSHG	Bush 7/8 x 3/4 x 3/4	2
2130 - 84	BP-BUSHF	Bush 7/8 x 5/8 x 3/4	2
1700 - 71 - 02	BP-3/4SPIN	Square Pin 3/4"	1
1700 - 72 - 02	BP-5/8SPIN	Square Pin 5/8"	1
9305 - 11	BP-20PIN	Bougault Pin 20 Chrome	1
9305 - 17	BP-21PIN	Bougault Pin 21 Chrome	1
9305 - 31	BP-26PIN	Bougault Pin 26 Chrome	1
NCNZC20G8	BP-NUT3/4	Nut Conelock 3/4 ZP UNC	1
NCNZC166G8	BP-NUT5/8	Nut Conelock 5/8 ZP UNC	2



BP - BUSH37MM



BP - BUSH60MM



BP - BUSH105MM



BP - HOUSING/BUSH



BP-BUSHG



BP-BUSHF



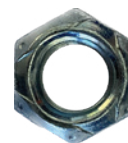
BP-3/4SPIN



BP-5/8SPIN



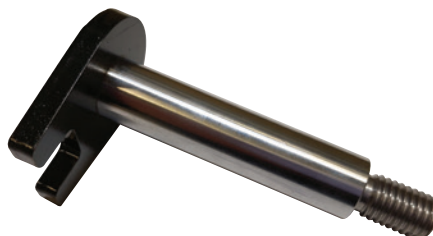
BP-NUT3/4



BP-NUT5/8



BP-20PIN



BP-21PIN



BP-26PIN

BUSH KITS FOR PRECISION SEEDERS

OEM NO.	PRODUCT CODE	ITEM	DESCRIPTION	QTY
---------	--------------	------	-------------	-----

MORRIS C2 BUSH KIT - C2BUSHKIT



C2-BUSHS51494 C2-BUSH 1X1.1/4X26



C2-BUSHS58747 C2-BUSHS58744



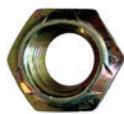
C2-BUSHS58746 C2-WASHER S42675



C2-WASHER S42674 C2-FLATWASHER W-476



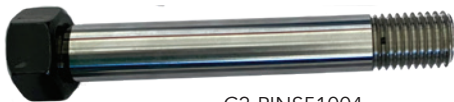
C2-PINS58730



C2-NUTD-5273



C2-NUTD-5274



C2-PINS51004



C2-PINS51006



C2-PIN 1 X 170

S51494	C2-BUSHS51494	2	.75 ID x 1" OD x 1" Long Bush Vesconite	2
S59806	C2-BUSH 1 X 1.1/4X26	21	1" ID x 1-1/4 OD x 1" Lg Bush Vesconite	4
S58747	C2-BUSHS58747	20	3/4 ID x 1 OD x 1.875 Lg Bush Vesconite	2
S58744	C2-BUSHS58744	18	3/4 ID x 1" OD x 1" Long Bush Vesconite	2
S58746	C2-BUSHS58746	19	3/4 ID x 1" OD x 1.313 lg Bush Vesconite	3
S42675	C2-WASHER S42675	7	1-1/32 ID x 2 OD WASHER NYLON	4
S42674	C2-WASHER S42674	6	1-1/32 ID x 2"OD x 1/8" WASHER NYLON	2
WFRHTZM201038T037	C2-FLATWASHER W-476	22	13/16ID x 1-1/2"OD x 11	4
S42952	C2-PIN 1 X 170	10	25mm x 6-5/8 lg Bolt / Pin CHROME	1
S58730	C2-PINS58730	5	3/4 x 1 29/32 UL Bolt / Pin CHROME	1
S51004	C2-PINS51004	8	3/4 x 5-1/8 Lg Bolt / Pin CHROME	1
S51006	C2-PINS51006	9	3/4 x 6-3/8 Lg Bolt / Pin CHROME	2
D-5273	C2-NUTD-5273	3	3/4" UNC ZP LOCKNUT	3
D-5274	C2-NUTD-5274	4	1" UNC ZP LOCKNUT	1



BUSH KITS FOR PRECISION SEEDERS

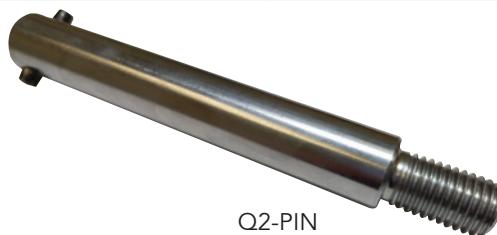
MORRIS QUANTUM BUSH KIT - MQBUSHKIT



OEM NO.	PRODUCT CODE	DESCRIPTION	QTY
562987	Q2-BUSH 1 x 1.1/ x 26	Bush plastic Vesconite 1 x 1 x 26	
567549	Q2-BUSH 1 x 1.1/2 x 26	Bush plastic Vesconite 1.1/2" LONG Quantum	
565038	Q2-PIN	Chrome Pin for Quantum 1 x 1.1/2 x 26	



Q2-BUSH



Q2-PIN



HORWOOD BAGSHAW PSS BUSH KIT - HBBUSHKIT



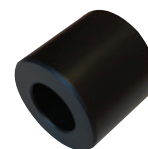
823153	HB-BUSHFLANGED	Bush Flanged	8
824073	HB-PIN	Pin - Internal thread	4
	HB-SPACER	Spacer Plastic	N/A
823154	HB-BUSH	Bush straight	N/A



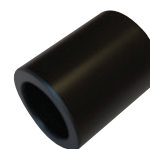
HB-BUSHFLANGED



HB-PIN



HB-SPACER



HB-BUSH

SEED HAWKE BUSH KIT - SHBUSHKIT



310221	SH-BUSHB	Connex Spring steel bush 1 x 3/4 x 3/4	2
310222	SH-BUSHC	Connex Spring steel bush 1 x 3/4 x 5/8	2
310220	SH-BUSHA	Connex Spring steel bush 1 x 3/4 x 1.1/4	2



SH-BUSHB



SH-BUSHC



SH-BUSHA

SEEDMASTER BUSH KIT - SMBUSHKIT



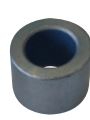
400222	SM-SPACER A	Machined spacer	1
400241-2	SM-SPACER B	Machined spacer B	4
250601	SM-BUSHD	Bush 1.1/2 x 1.1/4 x 7/8	3
250604	SM-BUSHE	Bush 1.1/2 x 1.1/4 x 1.1/8	1



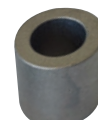
SM-BUSHD



SM-BUSHE



SM-SPACER A



SM-SPACER B

EQUALIZER BUSH KIT - R101-BUSHKIT



2-M12WF	Flat Washer M12 ZP Hard	2
R86-BUSH	Machined Bush	1
R87-7/16BOLT	7/16 Bolt, ZP, 8.8, UNC	1
R88-7/16NUT	7/16 Cone lock Nut, ZP, 8.8. UNC	1



R101-BUSHKIT



RHINO SEED BOOT TO SUIT EQUALIZER

Groundhog Industries has been at the forefront of the design and manufacture of seed boot technology for a decade. We have extensive experience in seed boot product delivery

and wearing materials to suit the most abrasive agricultural conditions on the planet.

Our latest seed boot to suit the Equalizer™ Min Till machine is our Rhino Seed Boot system.

AUS PATENT NUMBER: 2018100865



19	19-GH010	Roll Pin
20	20-GH32	Plastic Seed Boot
77A	77A-5B8V2	Splitter Boot V2
R94-STH	R94-STH	Seed Boot Holder
R94-CB	R94-CB	Cricket Bat
103	103-PSV3	Plastic Sleeve

**SUITS
EQUALIZER
BARS**

- Versatile.
- Choose a 3" Splitter Boot or In-Line system with three closing tools.

Choose from:

- 24-GH030HD
- Platinum - PW48
- Platinum - PW62



At Groundhog we listen to farmers and what they want. We know how important it is to be able to make decisions quickly about crop type or seeding depth on the go. That's why we invented a system that allows five seeding options using one boot. No loosening bolts & rattle guns. Simple design is key. Also, the seeding tube can be ordered as either stainless or steel tubing to reduce blocking issues.

Split seeding or inline seeding should be an option at any time, not a set and forget thing. It should also be affordable. That's why we have 2 x separate 3" splitter boots and 3 x inline closing tools in widths of 30mm, 48mm & 62mm. All tools can be easily swapped out with one pin. All tools are great value and have a large amount of tungsten applied on each.

RHINO BLADE SYSTEM TO SUIT EQUALIZER

Groundhog Industries has been the leader in design and manufacture of knife point / shear technology for a decade. We sell thousands each year. We have extensive experience in materials and designs and tungsten carbide application to suit the most abrasive agricultural conditions on the planet.

Our latest shear / knife to suit the Equalizer™ Min Till machine is our Rhino Blade System.

AUS PATENT NUMBER: 2018100789
SOUTH AFRICA DESIGN APPL. NO.: A2018/01120



- Two separate knife lengths 5" & 6". One inch longer than OEM.
- More cost effective than competitors.

**SUITS
EQUALIZER
BARS**

6 & R132

10 & 9

R91-RBH R91

R90-RSB R90

5"

6"

R89-RSB R89

6	6-M12CONE	Cone Lock Nut M12
9	9-GH005	Clevis Pin
10	10-GHSPIN	Split Pin
R89	R89-RSB	Rhino Straight Blade 6"
R90	R90-RSB	Rhino Straight Blade 5"
R91	R91-RBH	Rhino Blade Holder
R132	R132-B1250	Bolt M12 x 50

- The Rhino Blade System comprises two parts. Holder and Blade.
- Holder and Blade are joined using a Clevis and Split Pin.
- The Rhino Blade and Holder are tapered to assist extraction.

- The Holder has a cast hole at rear to allow for liquid fertiliser tube.
- Two options of Straight Blade or Busting Blade.



FOR SALES CONTACT:

TEL: 08 9337 7919

UNIT 1/22 SPHINX WAY BIBRA LAKE WA 6163

EMAIL: SALES@GROUNDHOG.COM.AU

  WWW.GROUNDHOG.COM.AU

WARRANTY INFORMATION

As the selection, set-up and use of tillage and seeding equipment is affected by variables beyond our control, neither the Manufacturer nor any persons employed on its behalf including dealers or agents are liable for any loss or damage, whether consequential or otherwise, resulting from the use of its products. Warranty may / may not apply where any product is used for other than its intended and recommended purpose, or is subjected to pressures, loads or conditions beyond that for which it is designed. Should a product not perform its intended or recommended function, contact Groundhog Industries.

We reserve the right to change prices at our discretion.

