



R A I S I N G T H E B A R

HARVEST
PRODUCT RANGE

2023/24

ABOUT US

When you grow up in a farming family there's one thing you come to quickly understand, farmers always find a way to get things done. They're resourceful, driven and determined.

It's this same work ethic that led us to create and build Groundhog Industries, and it's what continues to drive us today.

Launching in 2010 with just 4 products, we have spent 13 years working hard to expand our product range and have earned our reputation of supplying high quality, consumable wear parts to the agricultural industry, nationally.

We've been able to grow with a focus on creative, best-practice solutions and outstanding customer service.

Our vision for Groundhog has always been to help farmers solve problems of efficiency and durability through innovative design.

By using our hardened pickup tines in conjunction with our poly pickup bands, downtime spent changing prematurely worn tines and straightening steel bands can be avoided. Thus, providing customers with greater time efficiency and cost savings.

Through cutting-edge design, Groundhog products are better value per hectare than their competitors. All Groundhog products have been designed and tested to offer maximum protection from wear at the best price. While providing longer lasting wear resistant products we are committed to our customers reducing downtime and replacement costs.

We would welcome the opportunity to discuss how our products can best help you and your needs. Please feel free to drop by our premises in Bibra Lake, call our office, or send an email and let's chat.

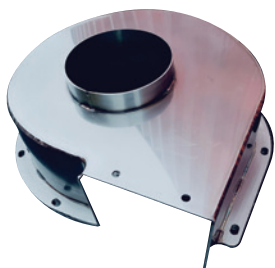


CONTENTS

HARVEST	STAINLESS STEEL HARVEST PARTS	2-4
	MACDON PARTS / POLY PICK UP BANDS - FOR HAY BALERS	5-6
	SPRINGS - FOR HAY BALERS	
	MASSEY / HESTON / KRONE	7
	NEW HOLLAND / JOHN DEERE	8
	Z RAKE TINES - FOR WHEEL RAKES / PLASTIC WHEELS	9
	RUBBER - MOUNTED RAKE TINES	10

ALL PRICES ARE + GST

THERE IS NO RELATIONSHIP BETWEEN GROUNDHOG INDUSTRIES AND AUSFLOW PTY.



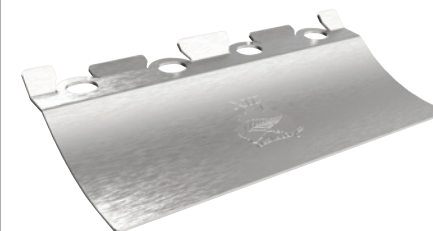
Code: S42-MSS
OEM Code:
CASEIH4743449
CASEIH VACUUM
FAN COVER



Code: S25
OEM Code:
XTD001
JOHN DEERE 936
UNDER BOTTOM
FRONT PAN BOLT
ON AND PLUG
WELD REPAIR 3MM
STAINLESS



Code: S58
OEM Code:
MACDON
102336
STAINLESS STEEL
3MM BOLT ON
LEFT HAND
SKID PLATE SUIT
MACDON 973-974



Code: S44
OEM Code:
MACDON
129297
STAINLESS STEEL
3MM CUTTER BAR
KNIFE GUARDS
SKID PLATE FOR
MACDON D60-FD1
SERIES



Code: S26
OEM Code:
XTD002
JOHN DEERE 936
2MM STAINLESS
UNDER BELT
REPAIR CHANNEL
PLUG WELD



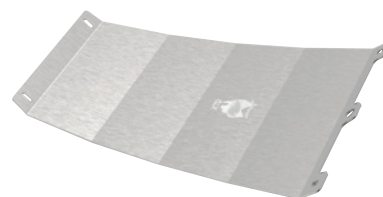
Code: S57
OEM Code:
MACDON
102337
STAINLESS STEEL
3MM RIGHT
HAND BOLT ON
SKID PLATE SUIT
MACDON 973-974



Code: S43
OEM Code:
MACDON
129297
STAINLESS STEEL
CUTTER BAR
SKID PLATES FOR
PRIMARY SALES
KNIFE GUARDS SUIT
D60-FD1 SERIES



Code: S27
OEM Code:
XTD003
STAINLESS STEEL
1.6MM PRESSED
CHANNEL FOR
JOHN DEERE
HEADER GRAIN
ELEVATOR REPAIR
PANEL

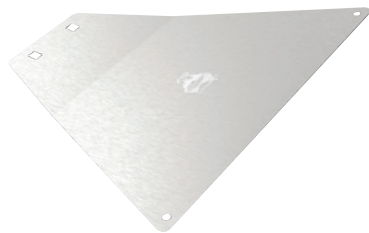


Code: S52
OEM Code:
MACDON
125393
STAINLESS STEEL
3MM CENTRE BOLT
ON FOR MACDON
D60



Code: S56
OEM Code:
MACDON
151551
STAINLESS STEEL
3MM SKID PLATE
FOR TRANSITION
PAN SUIT MACDON
D60-FD1 SERIES

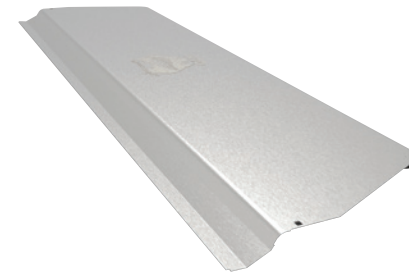
STAINLESS STEEL HARVEST PARTS



Code: S59
OEM Code:
MACDON
158660
 STAINLESS STEEL
 3MM BOLT ON
 CENTRE SKID
 PLATE SUIT
 MACDON 973-974



Code: S29
OEM Code:
MACDON
165386-5MM
SKIN
 BOLT ON 5MM
 STAINLESS RIGHT
 HAND SKID PLATES
 FOR MACDON
 D60-FD1 SERIES



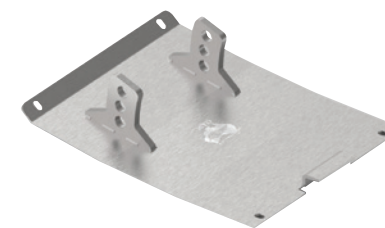
Code: S30
OEM Code:
MACDON
220852
 STAINLESS STEEL
 2MM HEAVY DUTY
 ADAPTOR FEEDER
 FLOOR UNDER
 DRUM



Code: S50
OEM Code:
MACDON
165188-3MM
SKIN
 BOLT ON 3MM
 STAINLESS LEFT
 HAND SKID PLATE
 FOR MACDON
 D60-FD1 SERIES



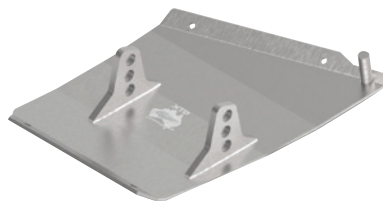
Code: S54
OEM Code:
MACDON
172133
 STAINLESS STEEL
 5MM WELDED
 FABRICATED LEFT
 HAND SKID PLATE
 FOR MACDON D60
 -FD1 SERIES



Code: S53
OEM Code:
MACDON
246396
 STAINLESS STEEL
 5MM WELED
 FABRICATED
 CENTRE SKID PLATE
 FOR MACDON D60-
 FD1 SERIES



Code: S28
OEM Code:
MACDON
165188-5MM
SKIN
 BOLT ON 5MM
 STAINLESS LEFT
 HAND SKID PLATE
 FOR MACDON
 D60-FD1 SERIES



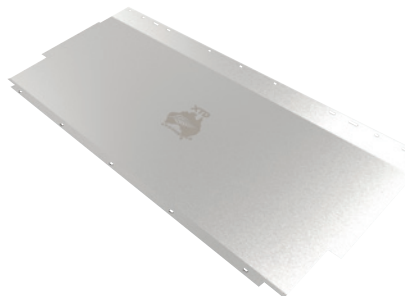
Code: S55
OEM Code:
MACDON
172134
 STAINLESS STEEL
 5MM WELDED
 FABRICATED RIGHT
 HAND SKID PLATE
 FOR MACDON
 D60-FD1 SERIES



Code: S40
OEM Code:
MACDON
246396-3MM
SKIN
 STAINLESS STEEL
 3MM SKIN FOR
 XTD246396 PLATE
 SUIT MACDON
 D60-FD1 SERIES



Code: S51
OEM Code:
MACDON
165386-3MM
SKIN
 BOLT ON 3MM
 STAINLESS RIGHT
 HAND SKID PLATE
 FOR MACDON D60
 TO FD1 SERIES



Code: S60
OEM Code:
MACDON
220446
 STAINLESS STEEL
 2MM BOTTOM
 ADAPTOR DROP
 PAN MACDON
 CA20 -CA 25

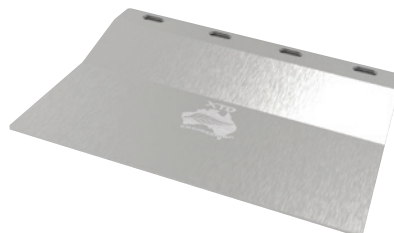


Code: S41
OEM Code:
MACDON
246396-5MM
SKIN
 STAINLESS STEEL
 5MM SKIN PLATE FOR
 XTD246396 PLATE
 SUIT MACDON D60-
 FD1 SERIES

STAINLESS STEEL HARVEST PARTS



Code: S31
OEM Code:
MACDON
257096
STAINLESS STEEL
6MM MOWER
SKID PLATE FOR
MACDON R113-116
AND KRONE EASY
CUT SERIES



Code: S34
OEM Code:
MACDON
295218
STAINLESS STEEL
CUTTER 3MM BAR
SKID PLATE FOR
HONEY BEE 4000
SERIES HEADERS
FRONT



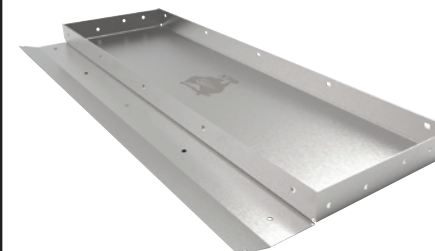
Code: S38
OEM Code:
CASE IH
87724571
STAINLESS
STEEL CHAFF
DEFLECTORS FOR
CASE HEADER
7120-8120-9120



Code: S60A
OEM Code:
MACDON
287768
STAINLESS STEEL
2MM BOTTOM
DROP ADAPTOR
PAN FOR MACDON
FD1 SERIES



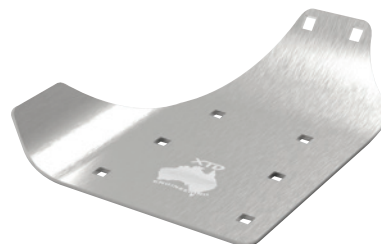
Code: S35
OEM Code:
FOR CASE
87047426
STAINLESS STEEL
6MM MOWER SKID
PLATE FOR CASE
87047426 AND
NEW HOLLAND



Code: S39
OEM Code:
CASE IH
87730307
STAINLESS STEEL
REAR FLOOR WELD
ASSEMBLY FOR
CASE HEADER SUIT
7010-7120



Code: S32
OEM Code:
MACDON
295218
RIGHT HAND
PIG TAIL FOR
XTD287768
BOTTOM PAN SUIT
MACDON FD1
SERIES



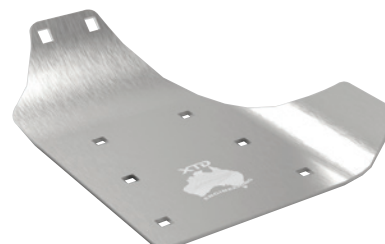
Code: S36
OEM Code:
CASE IH
87541485
STAINLESS STEEL
4MM LEFT HAND
CHAFF SPINNERS
FOR CASE
HEADERS
-7130-8240-9250



Code: S45
OEM Code:
JOHN DEERE
AE56948
STAINLESS STEEL
8MM MOWER SKID
PLATE FOR JOHN
DEERE MOCO
946-956 (QTY 2
REQUIRED)



Code: S33
OEM Code:
MACDON
295219
LEFT HAND
PIG TAIL FOR
XTD287768
BOTTOM PAN
SUITS MACDON
FD1 SERIES



Code: S37
OEM Code:
CASE IH
87541487
STAINLESS STEEL
4MM RIGHT HAND
CHAFF SPINNERS
FOR CASE HEADER
7130-8240-9250



Code: S46
OEM Code:
JOHN DEERE
H228454
STAINLESS STEEL
2MM HEAVY DUTY
ADAPTOR FEEDER
FLOOR SUIT JOHN
DEERE 635D-740D



MACDON PARTS



Product Code: GH129297
Name: Wearplate Macdon
OEM Part No.: 129297
Price: **\$14.00 +GST**



Product Code: GH76X45
Name: Knife Guard bolts
7/16x45mm & nut
Price: **\$0.85 +GST**



Product Code: GH132896
Name: Macdon Knife Head (left)
OEM Part No.: 132896
Price: **\$160.00 +GST**

Product Code: GH132897
Name: Macdon Knife Head (right)
OEM Part No.: 132897
Price: **\$160.00 +GST**



Product Code: GH132900
Name: Nylon Reel Finger
suits honey bee
OEM: SP18,SP21,SP25,SP30,
SP36,SP39,SP40,SP42
Price: **\$4.00 +GST**



POLY PICK UP BANDS



Before poly band application.



After poly band application.

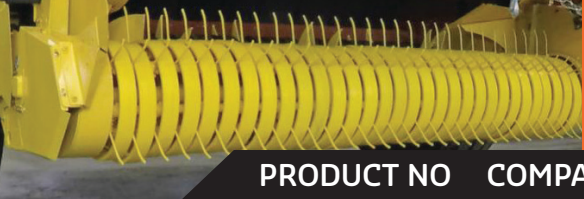








Fitting is quick and easy.



*Case, Hesston, Massey, AGCO, Challenger,
New Holland, John Deere*

POLY PICK UP BANDS: COMPATIBLE MACHINES



PRODUCT NO	COMPATIBLE MACHINES	PRICE
 PBBSHS	<ul style="list-style-type: none"> • Agco Models: 7433, 7434, 7444, 7423, 7424 • Challenger Sq. Models: LB23, LB24, LB33, LB34, LB35 • Challenger Round Models: RB46, RB56 • Massey Rd: 2846, 2856, 2946, 2956 • Massey Sq. Models: 2150, 2170, 2190, 2250, 2270, 2290, 2140, 2160 	\$52.00+GST
 PBTOJD-G	<ul style="list-style-type: none"> • John Deere Round Baler: 330, 335, 375, 385, 430, 435, 447, 448, 449, 456, 458, 459, 466, 467, 468, 469, 535, 545, 546, 547, 550, 556, 558, 559, 566, 567, 568, 569, 570, 572, 580, 590, 592. 	\$52.00+GST
 PBTONH-B	<ul style="list-style-type: none"> • New Holland Square Baler: 590, 590c, 595, BB940, BB960, BB9050, BB9060, BB9070, BB9080, 330, 340, LBX324, LB333, LB334, LB424, LB433, LB434, LBX322 • Case Square Baler: LBX331, LBX332, LBX421, LBX422 	\$52.00+GST
 PBRONH-B	<ul style="list-style-type: none"> • New Holland Round Baler w/Extra Sweep Head - Outer: BR7060, BR7090, BR7070, BR740, BR740A, BR750, BR750A, BR780, BR780A • Case Round Baler: RBX452, RBX453, RB454, RBX462, RBX463, RB464, RBX552, RBX562, RBX563, RB564 	\$52.00+GST
 PBRMNH-B	<ul style="list-style-type: none"> • New Holland Round Baler w/Extra Sweep Head - Middle: BR7060, BR7090, BR7070, BR740, BR740A, BR750, BR750A, BR780, BR780A • Case Round Baler: RBX552, RBX562, RBX563, RBX564 	\$52.00+GST
 PBKRONE	<ul style="list-style-type: none"> • Krone Square Balers: 1290 HPP2 8 String Baler 39 Bands OEMS: 270024560 1290 HPPHS 6 String Baler 39 Bands 	\$70.00+GST

LONGER LASTING WEAR RESISTANT PRODUCTS

After a customer complained to us about rocks and other objects continually bending his metal pickup bands, we developed our poly pickup bands. Our bands are made from heavy, flexible, high impact poly that will withstand impacts without damage. If pickup tines do rub against the bands, they will not wear through nearly as quickly as with steel bands. In addition, hay feeds through much more smoothly and easily. The ½ inch thick bands have a ¼ inch support ring on the inside to strengthen and maintain shape. Longer bolts (included) are required to attach the poly bands.





SPRINGS: MASSEY / HESTON

PRODUCT CODE

NAME

COMPATIBLE MACHINES

PRICE

POLY PICK UP BANDS



S62

Pickup Tine

- 2170
- 2190
- 2270
- 2290

\$6.80
+GST

PRODUCT CODE:

PBBSHS*

PRICE:

\$52.00+GST



DIMENSIONS:

A - 155
B - 60
C - 55

SQUARE BALER



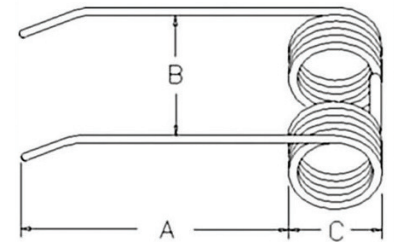
S63

Pickup Tine

- 4900 Heston
- 187 Massey
- Case 8590
- 190

\$6.80
+GST

DIMENSIONS DIAGRAM:



DIMENSIONS:

A - 170
B - 80
C - 35

SQUARE BALER



SPRINGS: KRONE

PRODUCT CODE

NAME

COMPATIBLE MACHINES

PRICE



S65

Pickup Tine

- HDP 1290 Krone

\$6.80
+GST

PRODUCT CODE:

PBKCRONE

PRICE:

\$70.00+GST

DIMENSIONS:

A - 120
B - 50
C - 35

SQUARE BALER



S66

Pickup Tine

- HDP 1290 Krone
High Speed

\$6.80
+GST



DIMENSIONS:

A - 140
B - 50
C - 40

SQUARE BALER



S79

Pickup Tine

- Krone HDP 1290
8 Stringer

\$6.80
+GST

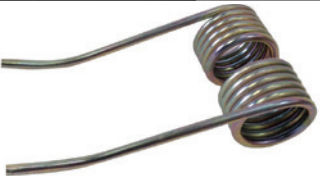






DIMENSIONS:

A - 140
B - 50
C - 40

SQUARE BALER

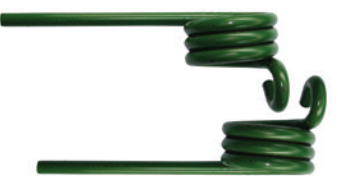

SPRINGS: NEW HOLLAND



PRODUCT CODE	NAME	COMPATIBLE MACHINES	PRICE	POLY PICK UP BANDS
 S77 DIMENSIONS: A - 110 B - 60 C - 40	Pickup Tine SQUARE BALER	<ul style="list-style-type: none"> New Holland BB Square Baler BB: 920, 930, 940, 950, 960, 9060, 9070, 9080 	\$6.80 +GST	PRODUCT CODE: PBTONH-B* PRICE: \$52.00+GST 
	Pickup Tine SQUARE BALER	<ul style="list-style-type: none"> 1290 Plus 	\$6.80 +GST	
 S67 DIMENSIONS: A - 150 B - 60 C - 40	Pickup Tine End ROUND BALER	<ul style="list-style-type: none"> BR + RBX Balers 	\$6.80 +GST	PRODUCT CODE: PBRONH-B (end)* PRICE: \$52.00+GST 
 S68 DIMENSIONS: A - 140 B - 65 C - 35	Pickup Tine Middle ROUND BALER	<ul style="list-style-type: none"> BR + RBX Balers 	\$6.80 +GST	PRODUCT CODE: PBRMNH-B (mid)* PRICE: \$52.00+GST 




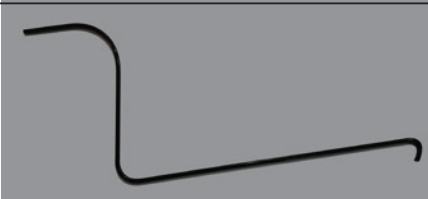
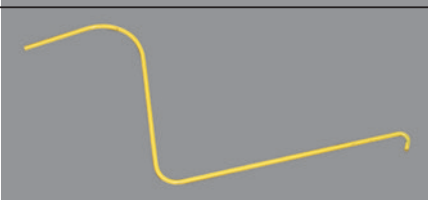
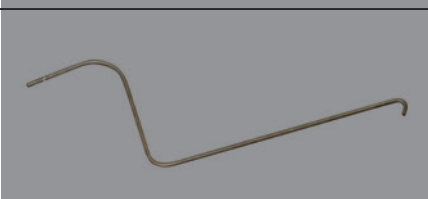

SPRINGS: JOHN DEERE

 S88 DIMENSIONS: A - 150 B - 60 C - 45	Pickup Tine Middle Heavy Duty ROUND BALER	<ul style="list-style-type: none"> John Deere Round Baler: 446, 447, 448, 456, 457, 458, 466, 467, 468, 546, 547, 556, 557, 558, 566, 567, 568 	\$7.50 +GST	PRODUCT CODE: PBTOJD-G* PRICE: \$52.00+GST
 S74 A - 135 C - 60	Pickup Tine Right Hand ROUND BALER	<ul style="list-style-type: none"> John Deere Round Baler: 446, 447, 448, 456, 457, 458, 466, 467, 468, 546, 547, 556, 557, 558, 566, 567, 568 	\$8.25 +GST	
S75 A - 135 C - 60	Pickup Tine Left Hand			
 S78 DIMENSIONS: A - 150 B - 60 C - 35	Pickup Tine with regular pickup ROUND BALER	<ul style="list-style-type: none"> John Deere Round Baler: 335, 375, 385, 435, 446, 447, 456, 457, 466, 447, 456, 457, 466, 467, 535, 546, 547, 556, 557, 566, 67 th 	\$5.75 +GST	

* see page 6 for more details of compatible machines



HAY RAKES: Z RAKE TINES

		PRODUCT CODE	NAME	COMPATIBLE MACHINES	PRICE
		S69	Z Rake Tine	• Vicon	\$4.10 +GST
		S89	Z Rake Tine	• KLine	\$4.10 +GST
		S70	Z Rake Tine	• Sitrex	\$4.10 +GST
		S64	Z Rake Tine	• Taege (Schinckel) • John Shearer	\$4.10 +GST
		S90	Z Rake Tine	• Wilkins	\$4.10 +GST

FOR SCHINCKEL
RAKES:








PLASTIC WIND
GUARD: **S85**
\$50.00 +GST

OUTSIDE RING:
S86
\$75.00 +GST



HAY RAKES: RUBBER TINES



	WILL REPLACE OEM PART No	PRODUCT CODE	NAME	COMPATIBLE MACHINES	PRICE
NEW HOLLAND		139041 850614	S71	Rubber Rake Tine Right Hand	• New Holland Rolabar Rake \$7.20 +GST
		65668 850613	S72	Rubber Rake Tine Left Hand	• New Holland Rolabar Rake \$7.20 +GST
		9847572	S84	Rubber Rake Tine	• New Holland Hayheads \$10.00 +GST
VERMEER			S80	Rubber Rake Tine 9"	• R-23, R-24 \$7.20 +GST
			S81	Rubber Rake Tine 10"	• R-23, R-24 \$7.20 +GST
		510501250	S82	Rubber Rake Tine 9"	• R-2300, R2400, R-2800 \$7.20 +GST
JOHN DEERE		EF288601 AE56204	S76	Rubber Rake Tine	• John Deere Rake \$7.20 +GST



2117RH
400341
491478

S83

Rubber Rake Tine

- Wheel Rakes
- Sitrex Pro 17 Rake
- Delta Hay Pro

\$10.00
+GST



RAISING THE BAR

FOR SALES CONTACT:

TEL: 08 9337 7919

UNIT 1/22 SPHINX WAY BIBRA LAKE WA 6163

EMAIL: SALES@GROUNDHOG.COM.AU

  WWW.GROUNDHOG.COM.AU

WARRANTY INFORMATION

As the selection, set-up and use of tillage and seeding equipment is affected by variables beyond our control, neither the Manufacturer nor any persons employed on its behalf including dealers or agents are liable for any loss or damage, whether consequential or otherwise, resulting from the use of its products. Warranty may / may not apply where any product is used for other than its intended and recommended purpose, or is subjected to pressures, loads or conditions beyond that for which it is designed. Should a product not perform its intended or recommended function, contact Groundhog Industries.

