



RAISING THE BAR



PRECISION FERTILISER
& SEEDING PARTS
PRODUCT RANGE
2024

ABOUT US



When you grow up in a farming family there's one thing you come to quickly understand, farmers always find a way to get things done. They're resourceful, driven and determined.

It's this same work ethic that led us to create and build Groundhog Industries, and it's what continues to drive us today.

Launching in 2010 with just 4 products, we have spent 13 years working hard to expand our product range and have earned our reputation of supplying high quality, consumable wear parts to the agricultural industry, nationally.

We've been able to grow with a focus on creative, best-practice solutions and outstanding customer service. Our vision for Groundhog has always been to help farmers solve problems of efficiency and durability through innovative design.

Through cutting-edge design, Groundhog products are better value per hectare than their competitors. All Groundhog products have been designed and tested to offer maximum protection from wear at the best price. While providing longer lasting wear resistant products we are committed to our customers reducing downtime and replacement costs.





We would welcome the opportunity to discuss how our products can best help you and your needs. Please feel free to drop by our premises in Bibra Lake, call our office, or send an email and let's chat.

THERE IS NO RELATIONSHIP BETWEEN GROUNDHOG INDUSTRIES AND AUSPLOW PTY.

CONTENTS

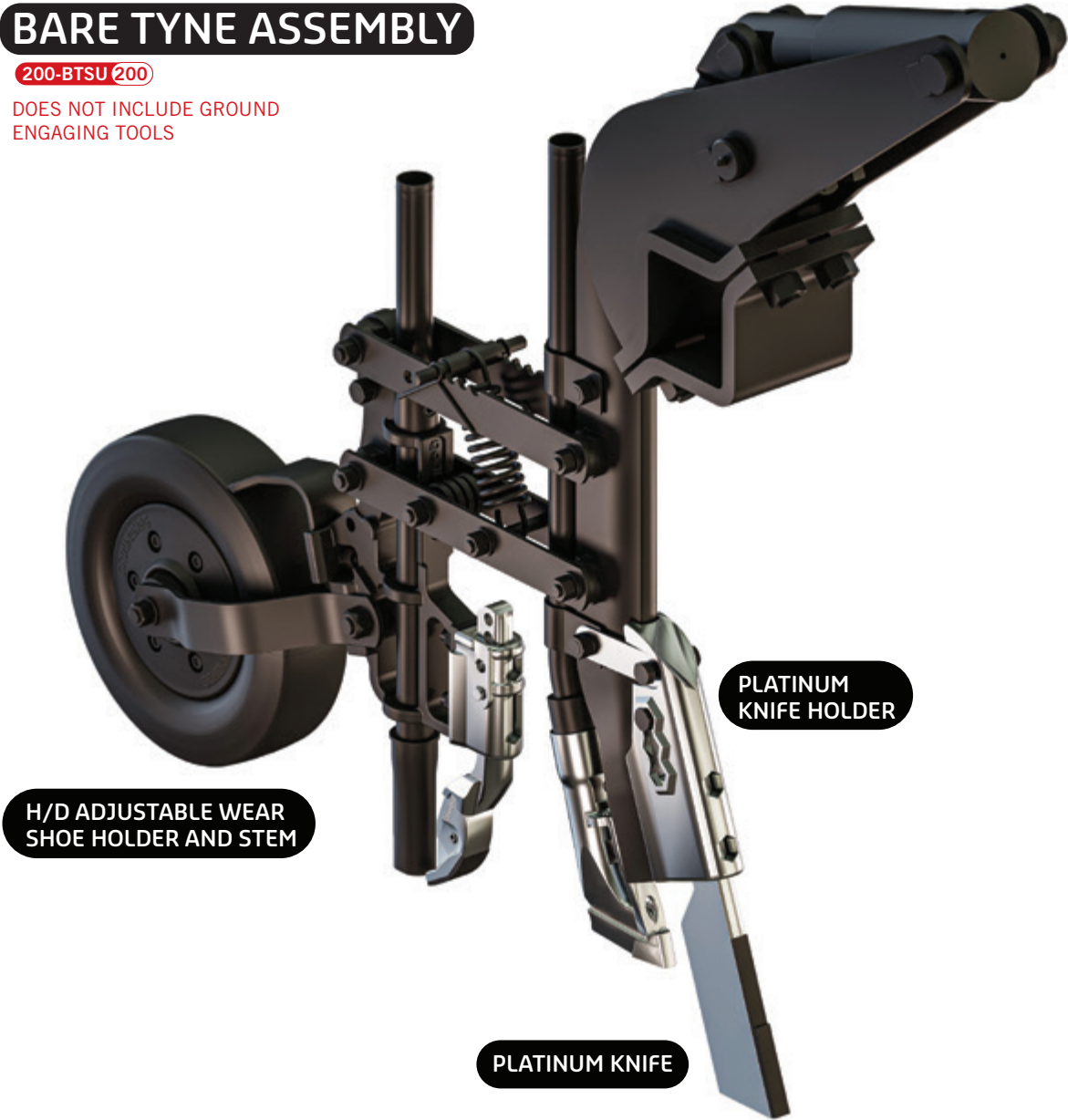
FULL ASSEMBLY	2
PLATINUM ADJUSTABLE RANGE	3
QUICK CHANGE KNIVES	4
LIQUID & GRANULAR FERTILISER BOOT	5
FASTPAC	6
WEAR SHOE & WEAR SHOE HOLDER	7
SPLITTER BOOTS	8
EXPLODED DIAGRAM	9-10
MUD SCRAPERS / STEEL	11-12
REAR CAST ARM ASSEMBLY	13-14
PRESS WHEELS	15
PARTS & ACCESSORIES	16-18
DEALERS	19

THROUGHOUT BROCHURE:

-  PRODUCT CODE
-  ITEM NUMBERS
-  KIT CODE
-  KIT NUMBERS

BARE TYNE ASSEMBLY

200-BTSU 200
DOES NOT INCLUDE GROUND
ENGAGING TOOLS



BARE TYNE ASSEMBLY

QTY	COMPONENT CODE	DESCRIPTION
2	1-M12X90	BOLT M12 X 90 ZP
6	2-M12WF	FLAT WASHER M12 ZP HARD
5	6-M12CONE	NUT M12 CONELOCK
1	7-SP120	SPRING 5.6 X 42 X120
1	17-M12X150	BOLT M12 X 150
1	42-PSH	PIN SPRING HOLDER
1	43A-PUSTOPPER	POLY URETHANE STOPPER
2	44-RSPRING	RETAINING SPRING
2	47-ARMUP	SIDE ARM UPPER (LONG)
2	48-ARMLW	SIDE ARM LOWER (LONG)
2	49-PWARM	PRESS WHEEL ARM
1	80-RCA	REAR CAST ARM
1	81-SST	STAINLESS SEED TUBE RCA
1	87-PWBOLT	PRESS WHEEL BOLT
1	88-PWLN	LOCK NUT FOR PW BOLT
2	108-BASP	BUSH ASSY - SHANK PIVOT
4	111-M20X60	BOLT M20 X 60 ZP
1	121-CPPB	CLAMP PLATE - PIVOT BRACKET
6	107-M20CONE	NUT - M20 - ZP - CONELOCK
1	112-WFM24	WASHER FLAT - M24 - ZP
1	110-M24NLOCK	NUT - M24 - ZP - CONELOCK
1	114-PBA	PIVOT BRACKET ASSY
1	113-WFM20	WASHER FLAT - M20 - ZP
3	70-FTB	BRACKET FOR SEED OR FERT TUBE
1	115-PJCB	PIN - JUMP CYL BASE
1	116-PSP	PIN SHANK PIVOT
1	117-GN	GREASE NIPPLE 1/4" BSW
1	128-CE	CIRCLIP EXTERNAL 25 X 1.2
1	109-CPL	CHEEK PLATE ASSY LEFT
1	106-HR70	HYDRAULIC RAM 70MM STROKE
1	120-CPAR	CHEEK PLATE ASSY RIGHT
1	122-PJC25X75	PIN 25X75 JUMP CYLINDER
1	119-P25X64	PIN 25 X 64 SHANK PIVOT
1	105-SHK	SHANK
1	69-GFT	GRANULAR FERT TUBE
3	R132	M12 X 50 BOLT
1	136-PWB	BUILT PRESS WHEEL 300MM X 70MM
1	118-VCR	VALVE CUSHION RETURN
4	123-SPK	SHANK PIVOT KIT

PLATINUM ADJUSTABLE RANGE

PLATINUM-PHWH-3 PHWH-3

PLATINUM KNIFE HOLDER KIT
INCLUDES ALL HARDWARE

PLATINUM-PSS PSS SIDESTRAP

- R132+M12X50 BOLT X2
- 6-M12 CONE NUT X2

- 0155 BOLT-1/2 X 2-1/4
- N-1/2 THIN NUT
- 2-M12WF WASHER

12-G8 12 X3.14NC8B 12 BOLT

13-12NCNN 13 NUT

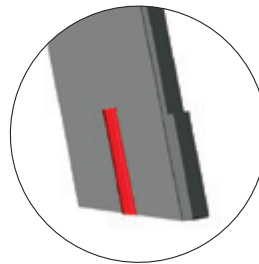
PLATINUM-PH02 PH02

PLATINUM KNIFE
HOLDER

PLATINUM-PK01 PK01

PLATINUM KNIFE

HFES B3HFES HARD FACING FOR EITHER SIDE OF KNIFE



PATENT NO. 2021105166

FEATURES

- Cast Knife Holder, forged Knife for superior strength.
- Highest grade of tungsten available and applied in house.

STABILISING
STRAP FOR ROCKY
CONDITIONS

ADJUSTABLE
KNIFE 7" TO 9"

PATENTED
TUNGSTEN TILE

LIQUID
FERTILISER

0008-PLASTIC PLUG 0008 PLUG

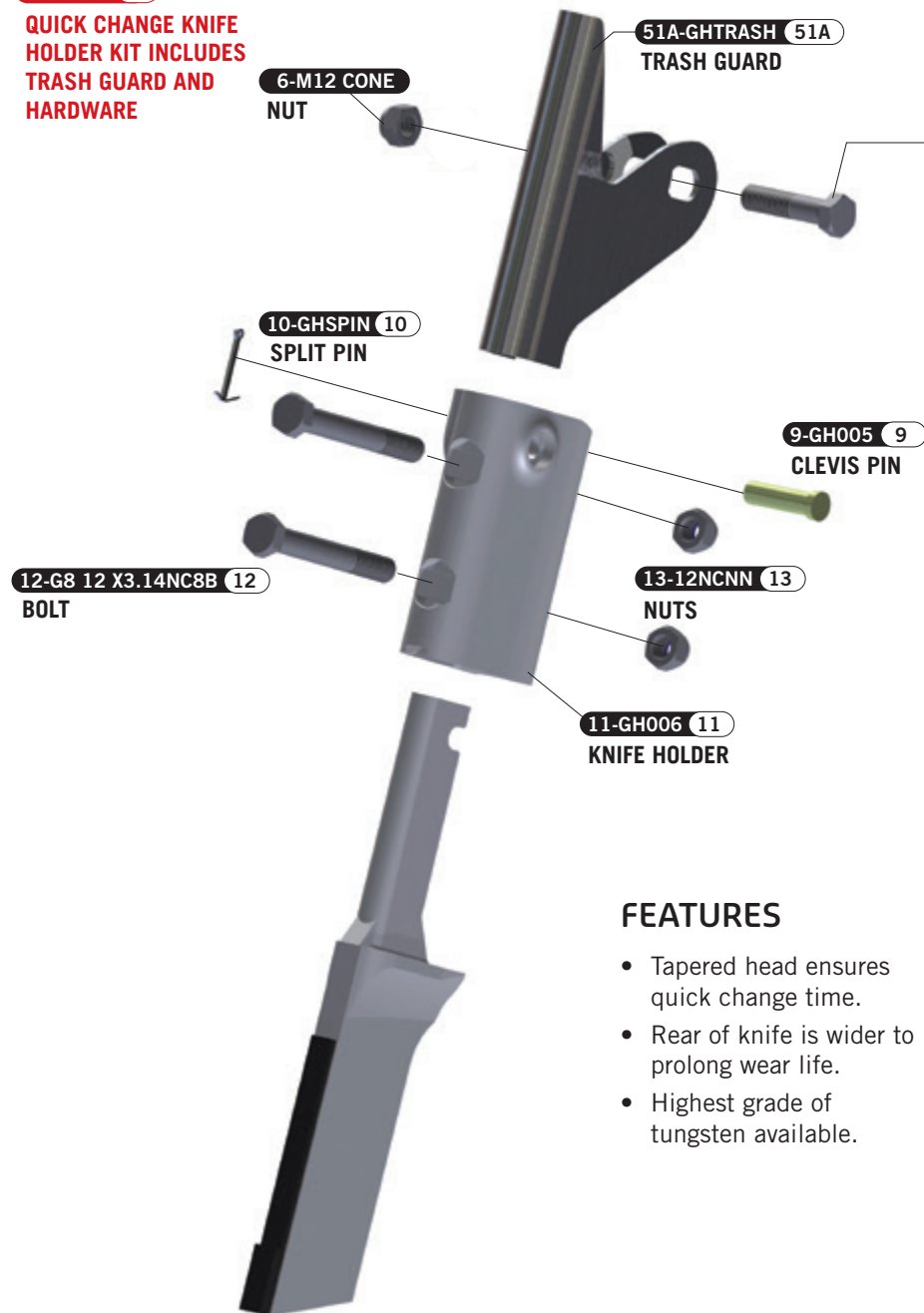
PLASTIC CAP TO
PREVENT DIRT BUILD
UP WITHIN KNIFE
HOLDER

HEAVY DUTY
TUNGSTEN
TILES

QUICK CHANGE KNIVES

KHKIT-01 01

**QUICK CHANGE KNIFE
HOLDER KIT INCLUDES
TRASH GUARD AND
HARDWARE**



51-GHTRASH 0051

**TRASHGUARD KIT
INCLUDES ALL HARDWARE**



FEATURES

- Tapered head ensures quick change time.
- Rear of knife is wider to prolong wear life.
- Highest grade of tungsten available.

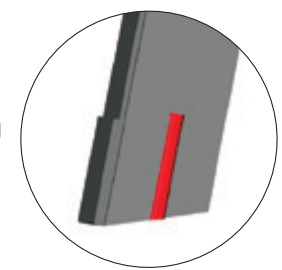
ATAAT B3ATAAT

**ADDITIONAL HARD FACING
ABOVE TUNGSTEN**



HFES B3HFES

**HARD FACING FOR EITHER
SIDE OF KNIFE**



SIZES AVAILABLE:



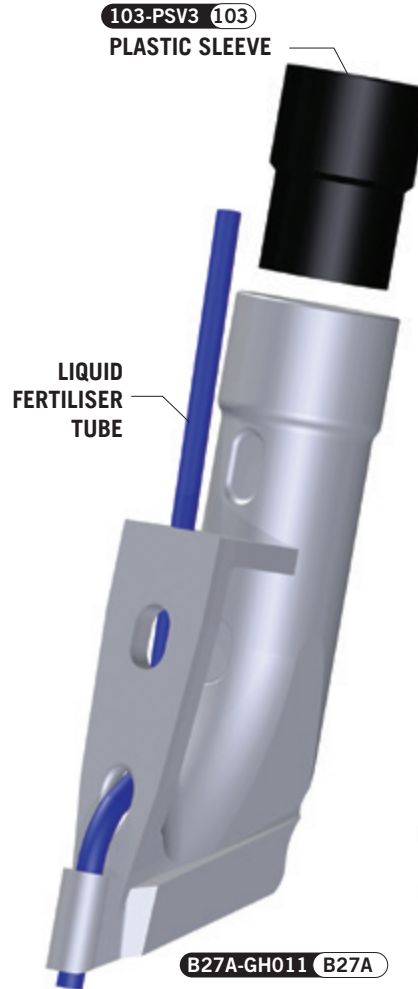
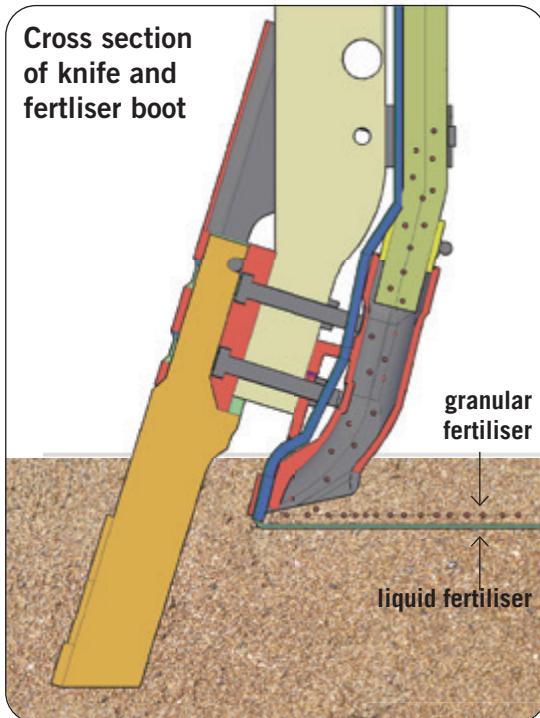
LIQUID & GRANULAR FERTILISER BOOT

FEATURES

- Robust cast boot provides accurate placement of liquid and granular fertiliser below the seed. This design enables the boot to be deeper in the ground and the tungsten side walls of the boot provide a wear resistant shield delaying the flow of soil back into the trench.
- Using plastic tube eliminates the need for expensive stainless steel tubing, the need to weld a nut to the rear of the point and prevents bending or blockages.
- The plastic tube remains undisturbed during point changes saving time and money.
- The boots design provides a protected pathway for the plastic fertiliser tube to ground level.
- Boot is compatible with stainless and powder coated granular fertiliser tubes.

DESIGN REG: 335057

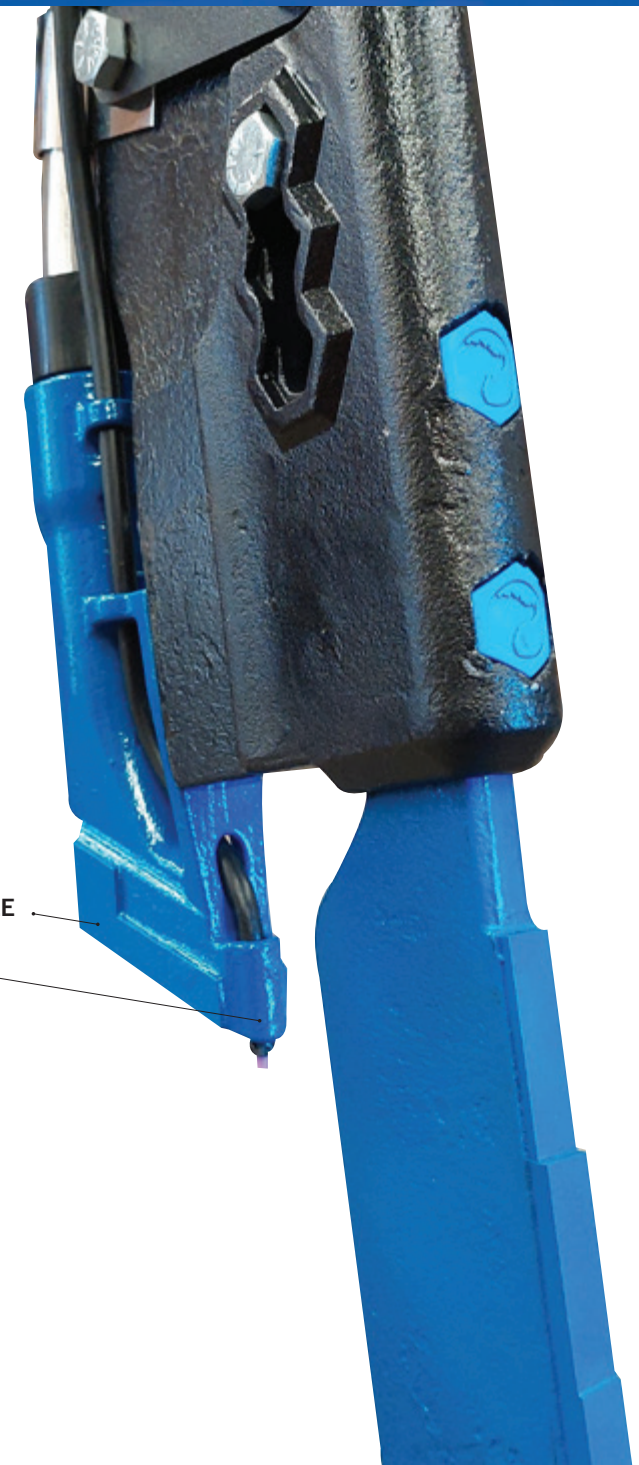
Cross section of knife and fertiliser boot



PATENT NO. 2021103456

PATENTED TUNGSTEN TILE

LIQUID FERTILISER



FASTPAC

Groundhogs Fastpac system is a new, cost effective, retro fit tool that allows the seeding bar operator to set the desired packing pressure on press wheels quickly across the whole seeding bar using four separate pressure settings from 20kg to 60kg of force onto ground. It's as simple as pulling a spring loaded pin.

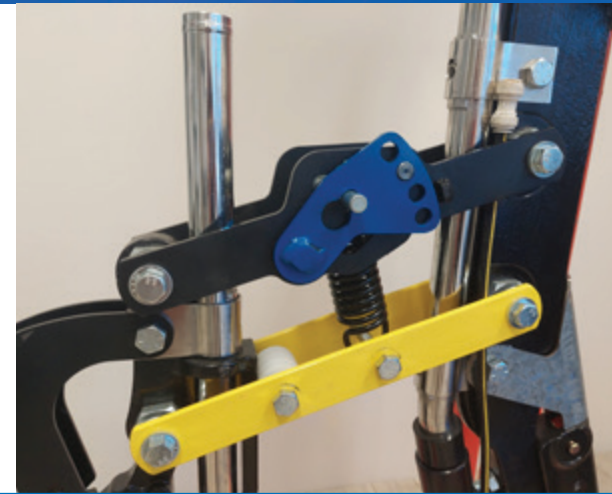
It's well known that correct packing pressure is critical for effective seed soil contact and establishing capillary action to draw moisture from deeper in the soil profile to the seedbed.

Different soils require different packing pressure. Too little packing pressure in dry loams or clays does not press out the soil clods enough to close the furrow, exposing any available soil moisture to evaporation. Too much packing pressure in wet clays or dry sand can result in the surface sealing effecting germination.

Fastpac creates the most ideal seed germination environment possible. Correctly closed and packed furrows reduce the risk of the available moisture bank evaporating, which is now recognised as critical, particularly with the shift to dry seeding.

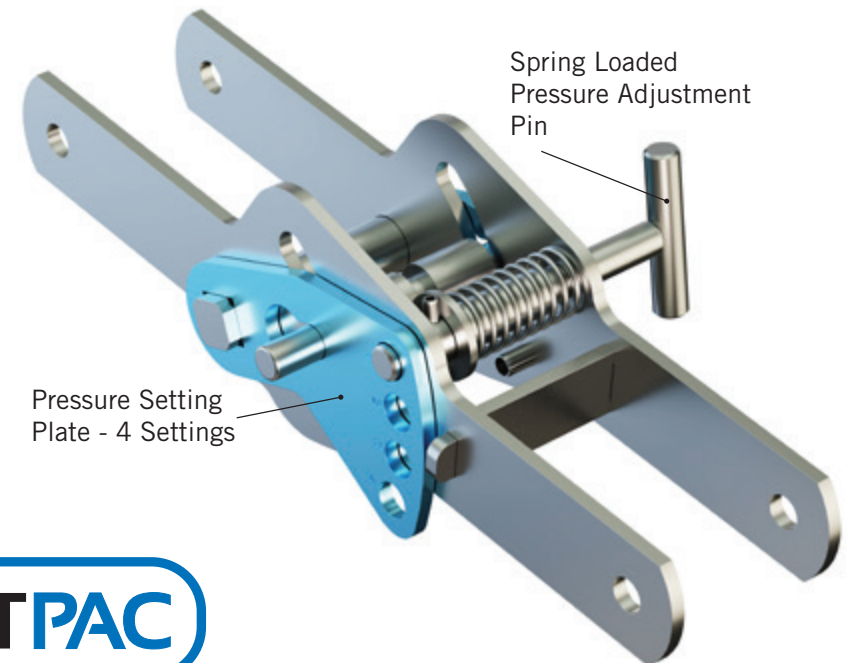
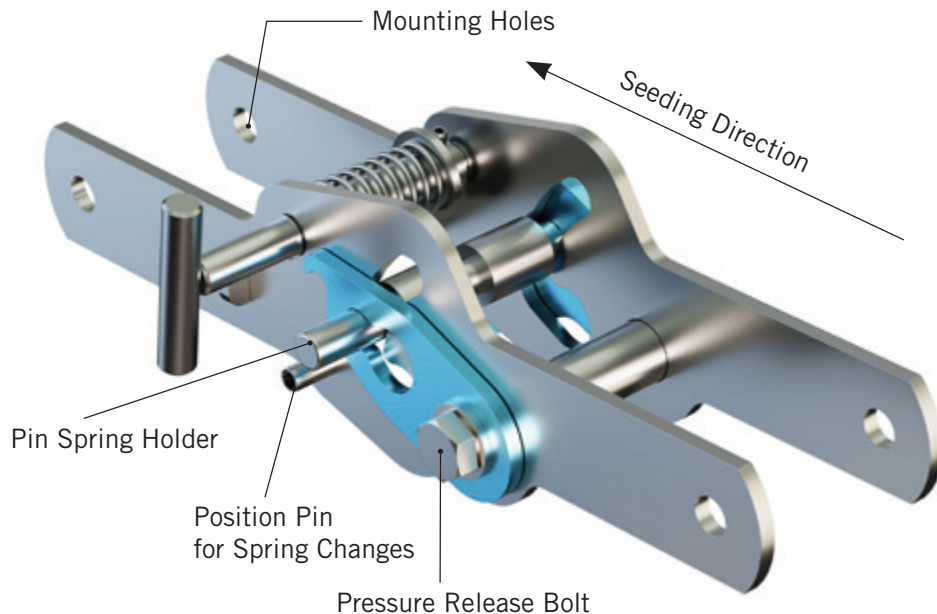
Fastpac will save you time and help you get better germination and can be easily and cheaply installed.

Call us today for more information and a quote to change your seeding machine.



41-PAP 41

FASTPAC - PRESSURE ADJUSTMENT SYSTEM



FASTPAC

Patent No.2021105165

PLATINUM RANGE

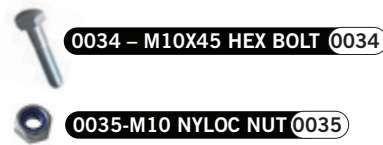
PWSHKIT 1 PLATINUM WEAR SHOE HOLDER KIT WITH HARDWARE



PLATINUM-PB04 (PB04)
WEAR SHOE
HOLDER

38-12X1.34NC8B (38)
BOLT

PLATINUM -PS03 (PS03)
ADJUSTABLE STEM



CHOOSE TWO OPTIONS TO
ADJUST SEEDING DEPTH:

1. BOLT & NUT

OR

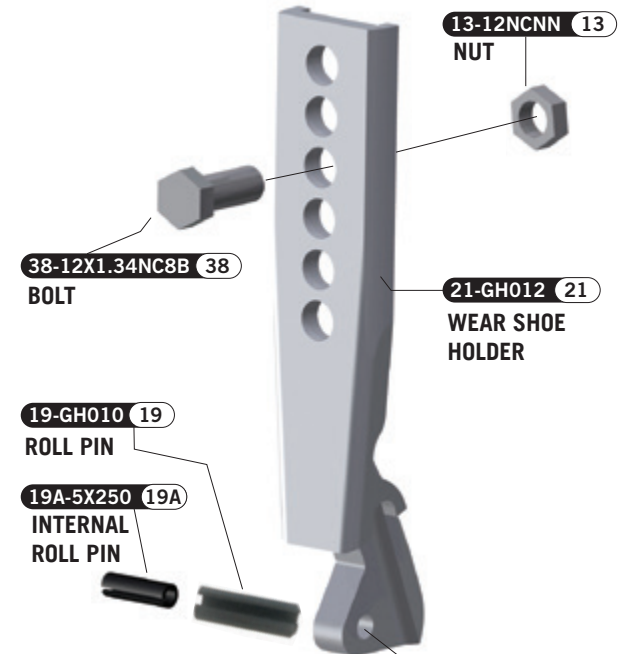
2. PIN

0019C RCLIP (19C)
R CLIP

9-GH005 (9)
CLEVIS PIN

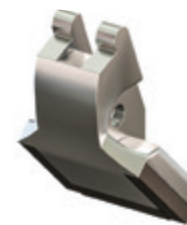
13-12NCNN (13)
NUT

WSHKIT-01 WEAR SHOE HOLDER KIT



FEATURES

- Made from two parts - 'Wear Shoe Holder' and 'Wear Shoe'.
- Most heavy duty closing tool on the market.
- Highest quality tungsten carbide used.
- The holder provides the same bolt hole pattern as a genuine closing tool.
- The wear shoe is made from cast steel and is secured using a high tensile roll pin (roll pin does not receive any load).
- Thick casting on wear shoe and large tungsten tiles on all sizes eliminates premature wear and therefore reduces replacement costs.
- Heavy duty flat tiles on sides and bottom.
- Wear Shoe is changed using a removable roll pin.



PLATINUM-PW62 (PW62)
PLATINUM 62MM
WEAR SHOE



PLATINUM-PW48 (PW48)
PLATINUM 48MM
WEAR SHOE



24-GH030HD (24)
WEAR SHOE 30MM

INLINE CLOSING TOOL OPTIONS

SPLITTER BOOTS 3" SPLIT

77A-SB80V2 77A

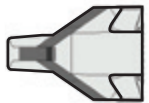
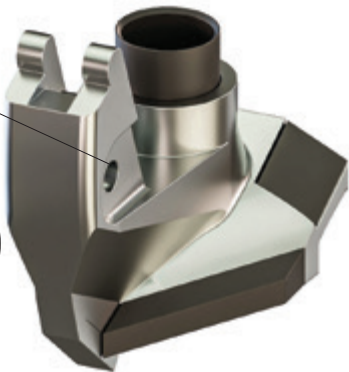
SPLITTER BOOT V2

- Leading tungsten tile at a reverse angle to help ride over obstacles
- Heavy duty tungsten applied to each wing
- Specific draft angle to reduce drag and friction
- Thick underside base
- Compatible with 70mm press wheel, best suited to 90mm+
- Extra tile of tungsten added to top of each wing

DESIGN REG: 364181

PLASTIC SLEEVE 60MM SERIES 3

103-PSV3 103



underside profile

77B-1V80 77B

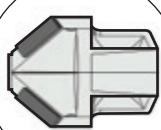
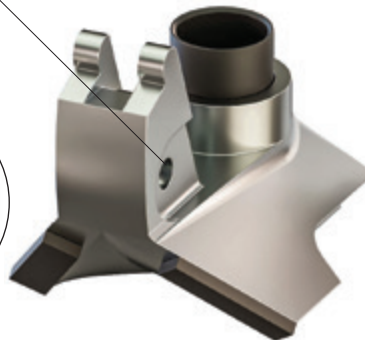
INVERTED SPLITTER BOOT

- Leading tungsten tile at a reverse angle to help ride over obstacles
- Alternate profile to suit heavy duty conditions
- Inverted base / rounded middle section closes the knife trench ensuring seed separation
- Suited to 70mm-120mm press wheel

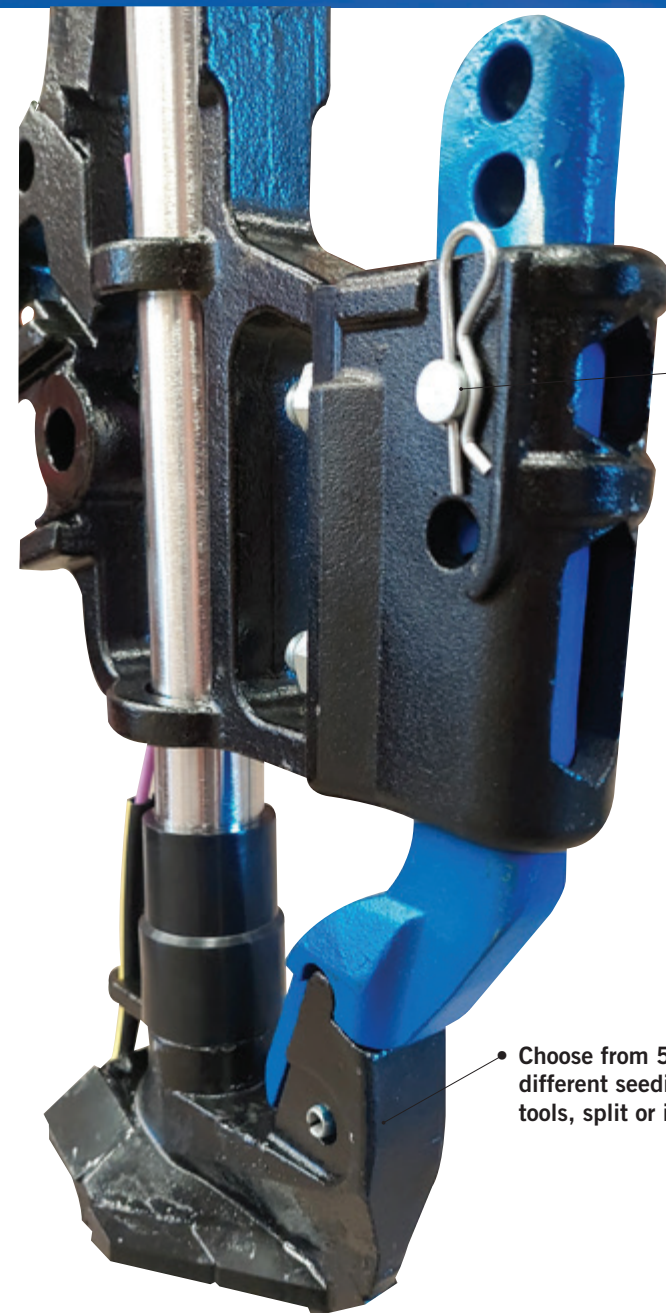
DESIGN REG: 201714877

PLASTIC SLEEVE 100MM SERIES 2

104-PSV2 104



underside profile

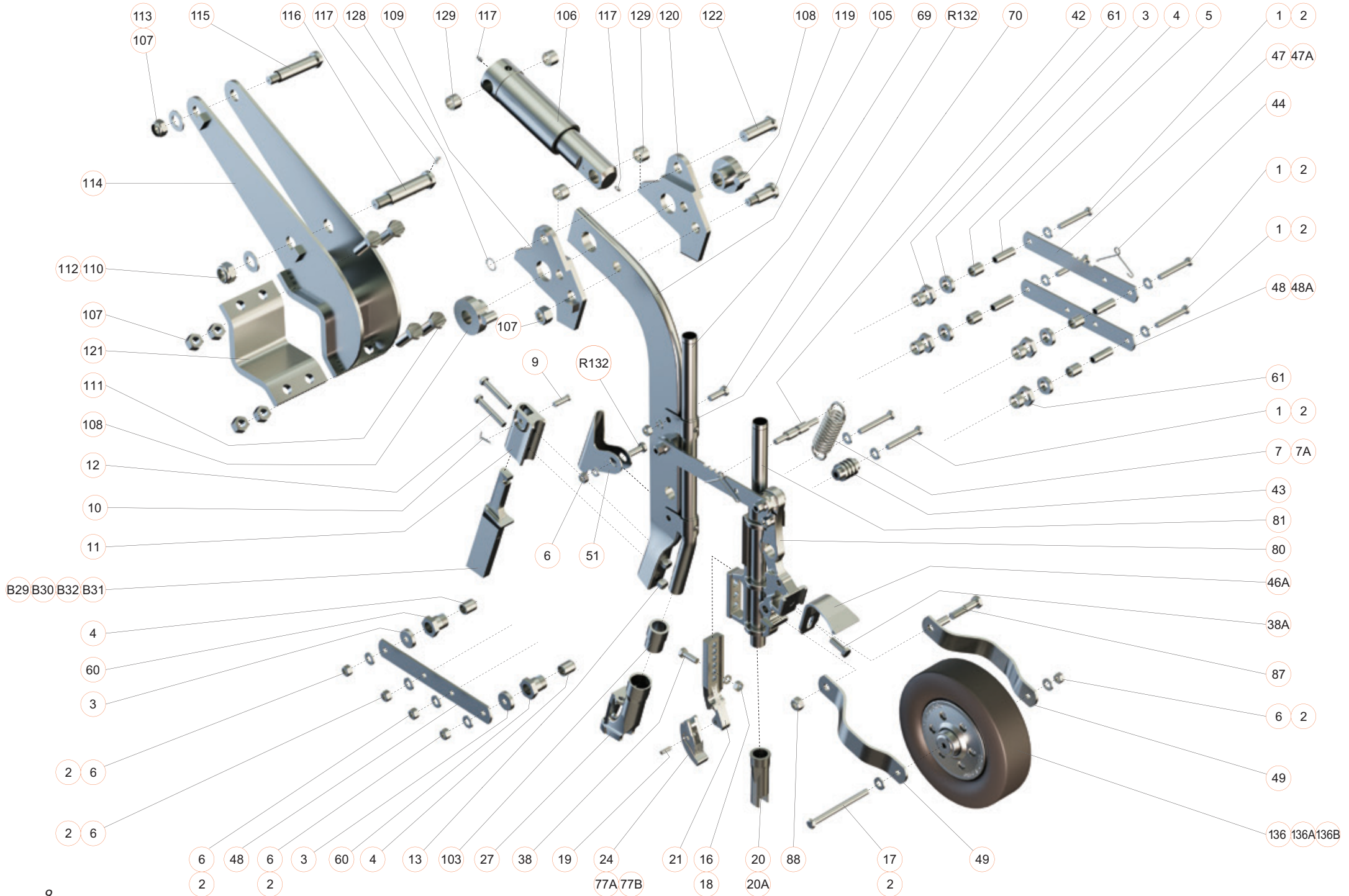


• Seed depth adjusted using R Clip and Clevis Pin or M10 Bolt & Nut

• Double the tungsten of competitors

• Choose from 5 different seeding tools, split or inline

EXPLODED DIAGRAM



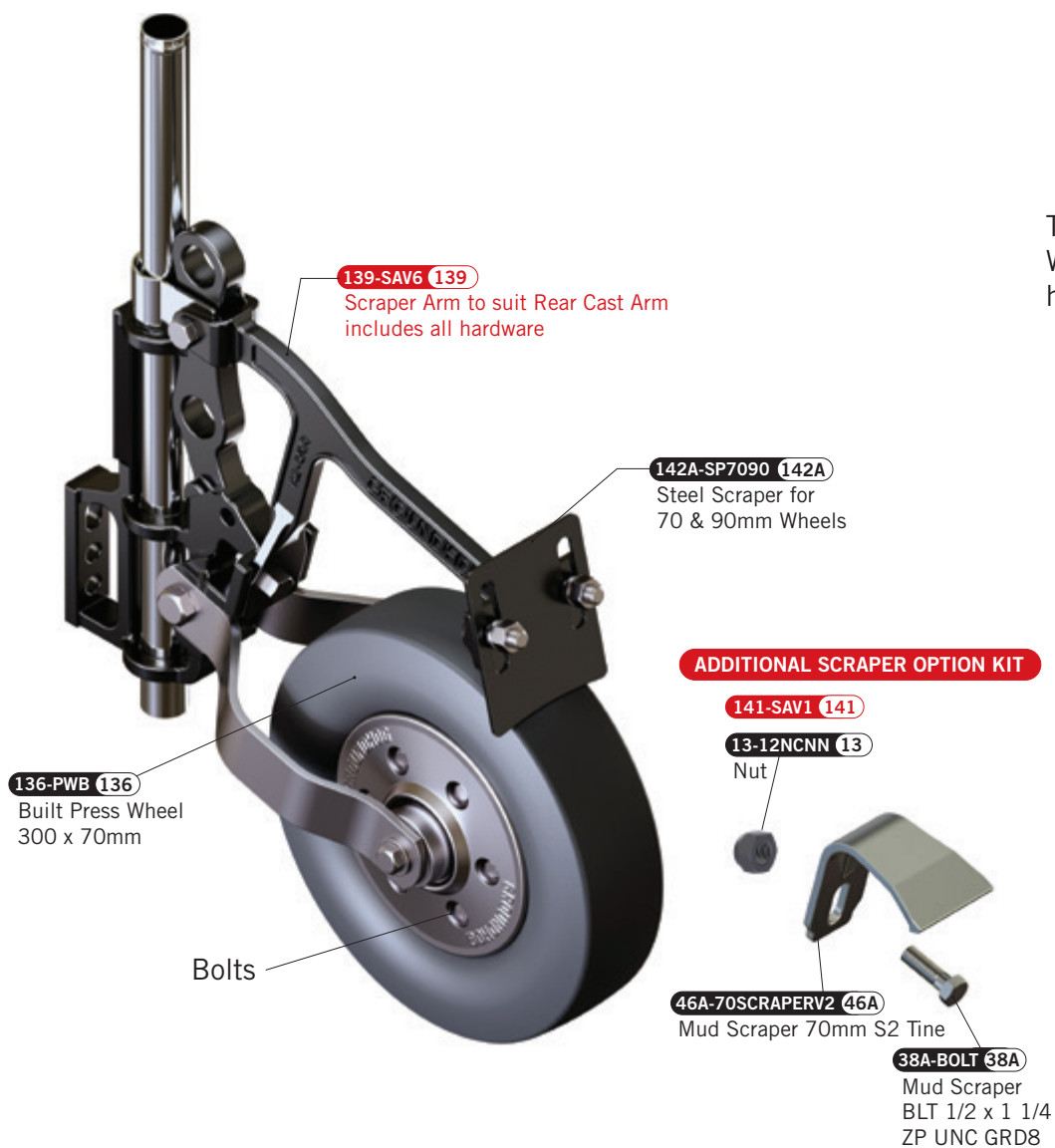
NOTES

1	1-M12X90	BOLT M12 X 90 ZP	61	61- BHN	BUSH HOUSING NUT
2	2-M12WF	FLAT WASHER M12 ZP HARD	69	69-GFT	GRANULAR FERT TUBE
3	3-GHSEAL	SEAL CAP ZP HOUSING DUST SEAL	70	70-FTB	BRACKET FOR SEED OR FERT TUBE
4	4-GHSB	SHORT BUSH SINTERED OIL IMPGD	80	80- RCA	REAR CAST ARM - REFER PAGE 11
5	5-GHLB	LONG BUSH SINTERED OIL IMPGD	81	81-SST	STAINLESS SEED TUBE RCA
6	6- M12CONE	NUT M12 CONELOCK	87	87- PWBOLT	PRESS WHEEL BOLT
7	7-SP120	SPRING 5.6 X 42 X120	88	88-PWLN	LOCK NUT
7A	7A-HDS	HD SPRING	103	103-PSV3	PLASTIC SLEEVE 60MM SERIES 3 REF. PAGE 10
9	9-GH005	CLEVIS PIN	105	105-SHK	SHANK
10	10-GHSPIN	SPLIT PIN BAG OF 50	106	106-HR70	HYDRAULIC RAM 70MM STROKE
11	11-GH006	KNIFE HOLDER	107	107-M20CONE	NUT - M20 - ZP - CONELOCK
12	12-G8 12 X3.14NC8B -	BOLT 1/2" -13 X 3 1/4"	108	108-BASP	BUSH ASSY - SHANK PIVOT
13	13-12NCNN	NUT 1/2" UNC NYLOC	109	109-CPL	CHEEK PLATE LEFT
17	17- M12X150	BOLT M12 X 150	110	110-M24NLOCK	NUT - M24 - ZP - NYLOCK
19	19-GH010	ROLL PIN REFER PAGE 6	111	111-M20X60	BOLT M20 X 60 C10.9 ZP
20	20-GH32	PLASTIC SEED BOOT - 32 ID REFER PAGE 15	112	112-WFM24	WASHER FLAT - M24 - ZP
21	21-GH012	WEAR SHOE HOLDER	113	113-WFM20	WASHER FLAT - M20 - ZP
24	24-GH030HD	WEAR SHOE 30MM HD TUNGSTEN	114	114-PBA	PIVOT BRACKET ASSY
27	27-GH011	FERTILISER BOOT REFER PAGE 5	115	115-PJCB	PIN - JUMP CYL BASE
B31	B31-GH07	7"KNIFE BUILT REFER PAGE 3&4	116	116-PSP	PIN SHANK PIVOT
R132		M12 X 50	117	117-GN	GREASE NIPPLE 1/4" BSW
42	42-PSH	PIN SPRING HOLDER	118	118-VCR	VALVE CUSHION RETURN
43	43-STOPPER	GH STOPPER	119	119-P25X64	PIN 25 X 64 SHANK PIVOT
44	44-RSPRING	RETAINING SPRING	120	120-CPAR	CHEEK PLATE ASSY RIGHT
46A	46A-70SCRAPERV2	MUD SCRAPER 70MM REFER PAGE 11	121	121-CPPB	CLAMP PLATE - PIVOT BRACKET
47	47-ARMUP	SIDE ARM UPPER (LONG) REFER PAGE 15	122	122-PJC25X75	PIN 25X75 JUMP CYLINDER
48	48-ARMLow	SIDE ARM LOWER (LONG) REFER PAGE 15	128	128-CE	CIRCLIP EXTERNAL 25 X 1.2
49	49-PWARM	PRESS WHEEL ARM	129	129-BSN	BUSH HYDRAULIC RAM
51	51-GHTRASH	TRASH GUARD	136	136-BPW	BUILT PRESS WHEEL REFER PAGE 12
60	60-BHOUSING	BUSH HOUSING			

THERE IS NO RELATIONSHIP BETWEEN
GROUNDHOG INDUSTRIES AND AUSPLOW PTY.

MUD SCRAPERS / STEEL

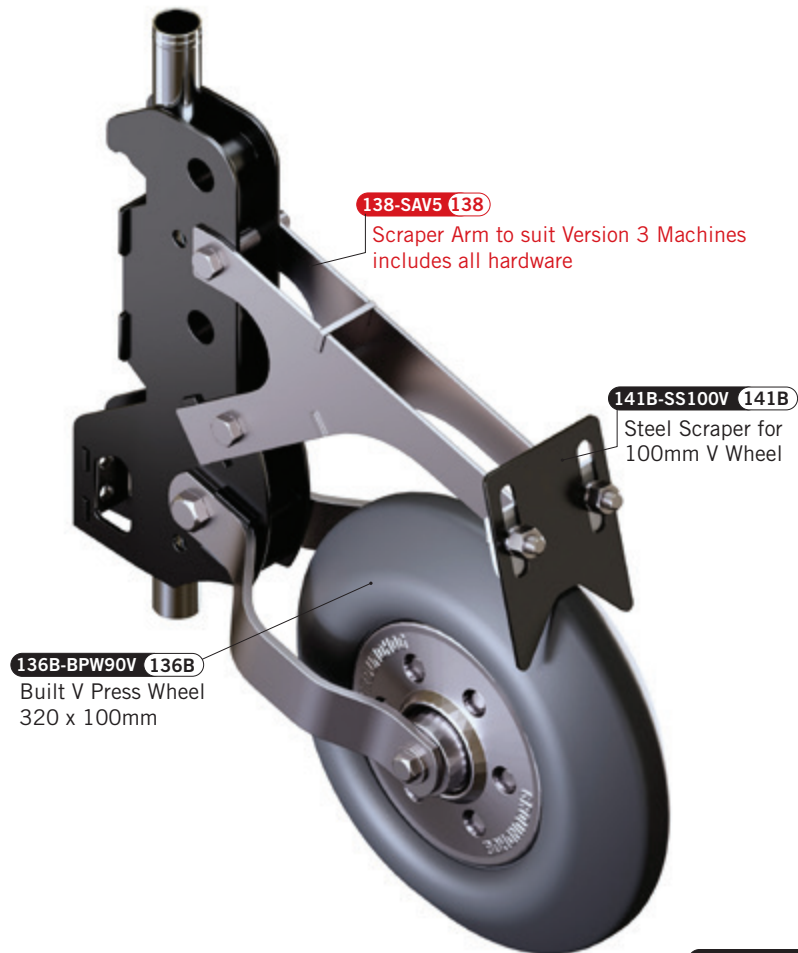
SCRAPER ARM TO SUIT REAR CAST ARM



SCRAPER ARM TO SUIT VERSION 2 MACHINES

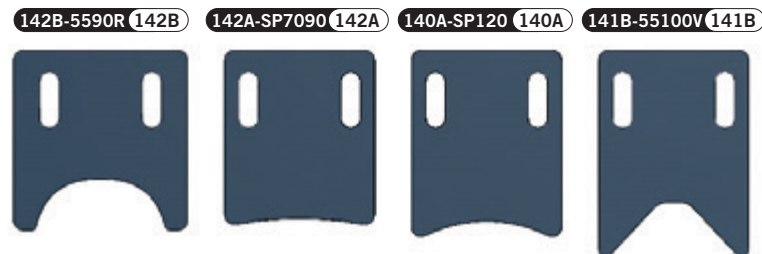
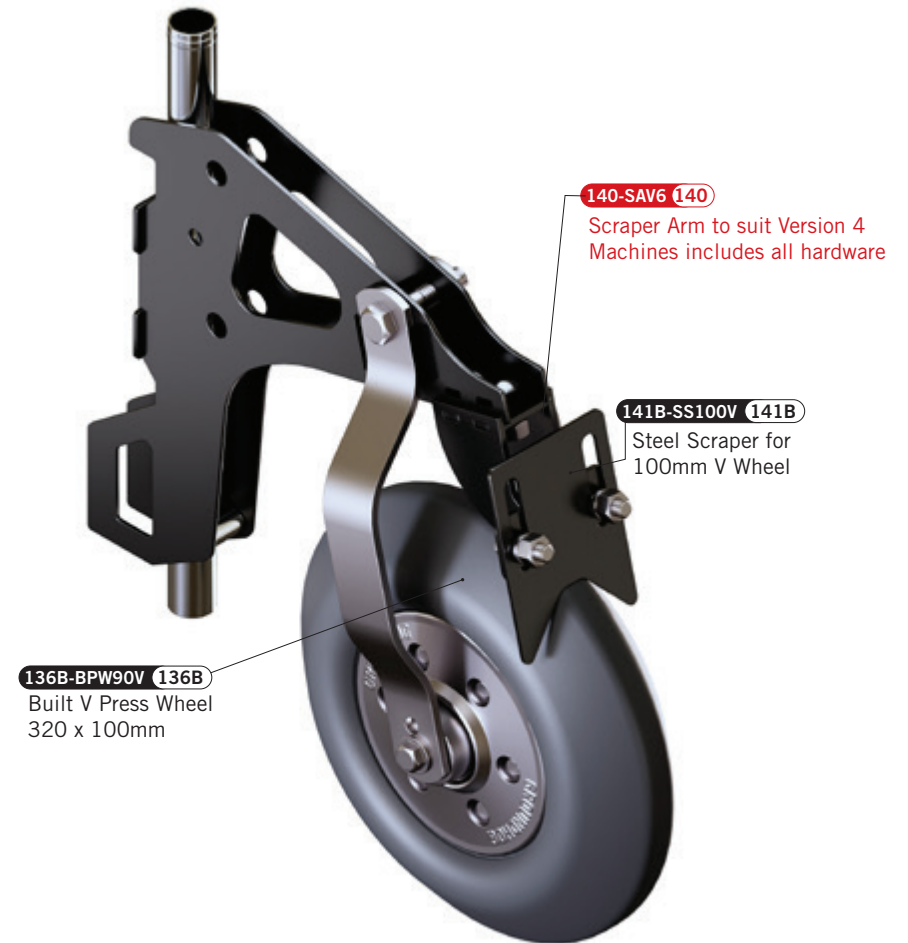


SCRAPER ARM TO SUIT VERSION 3 MACHINES



TIP:
Hard facing to face towards tyre

SCRAPER ARM TO SUIT VERSION 4 MACHINES



AVAILABLE SCRAPER OPTIONS
WEARING SURFACE IS HARD FACED

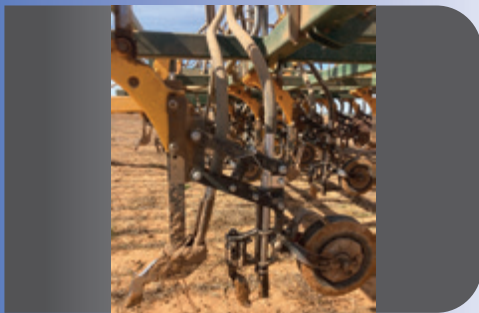
REAR CAST ARM ASSEMBLY



Conserva Pak



Primary Precision Seeder



Simplicity Overlander



John Shearer Trash Worker



FLEXICOIL HYDRAULIC TINE MACHINE

151-RCAM 151

Rear Cast Arm Mount
Universal mount subject
to machine assessment



PRIMARY PRECISION SEEDER

151B-PSA 151B

Primary Sales
Mount



SIMPLICITY OVERLANDER

151-RCAM 151

Rear Cast Arm Mount
Universal mount subject
to machine assessment



JOHN SHEARER TRASH WORKER

151A-JSM 151A

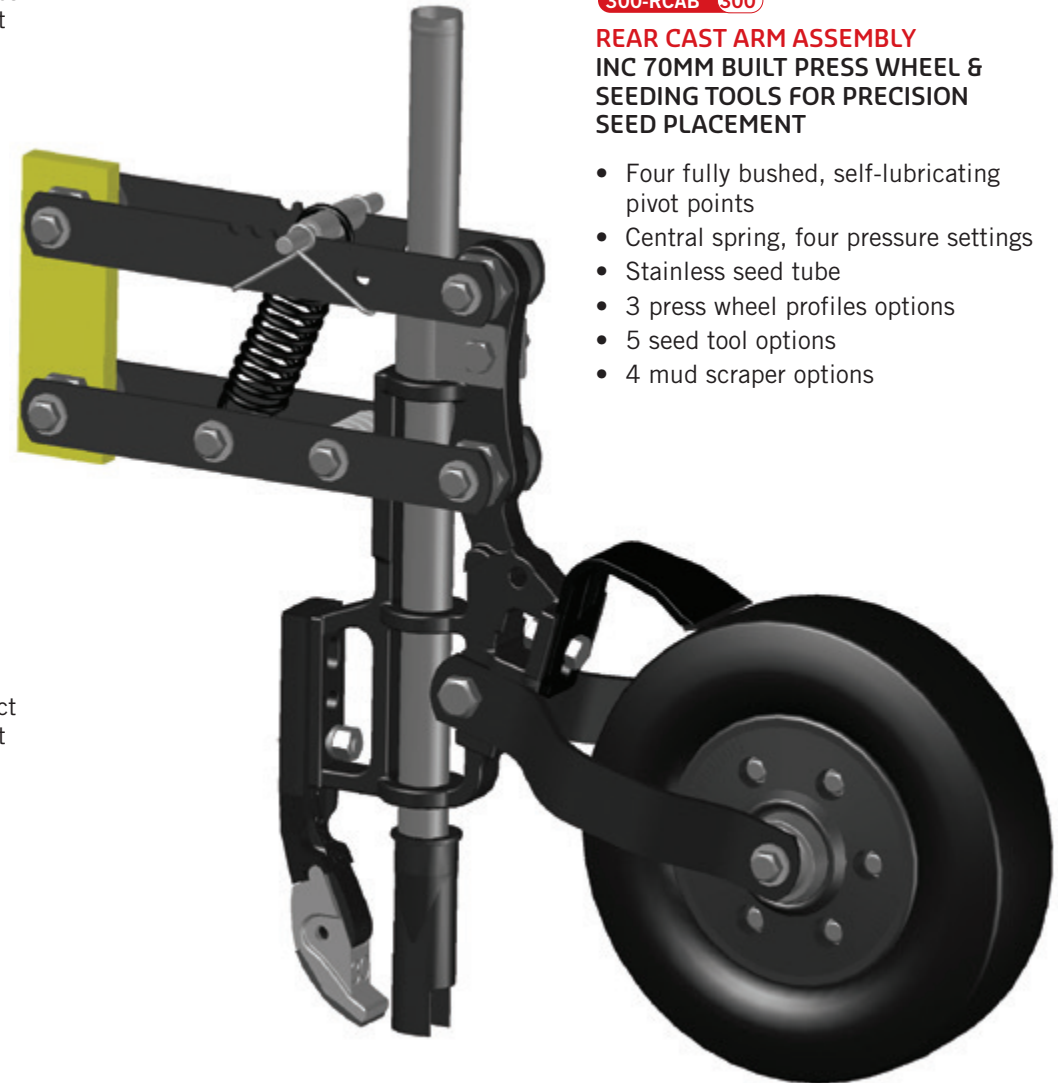
John Shearer Mount

**CAN BE RETRO FIT TO A
VARIETY OF MACHINES**

300-RCAB 300

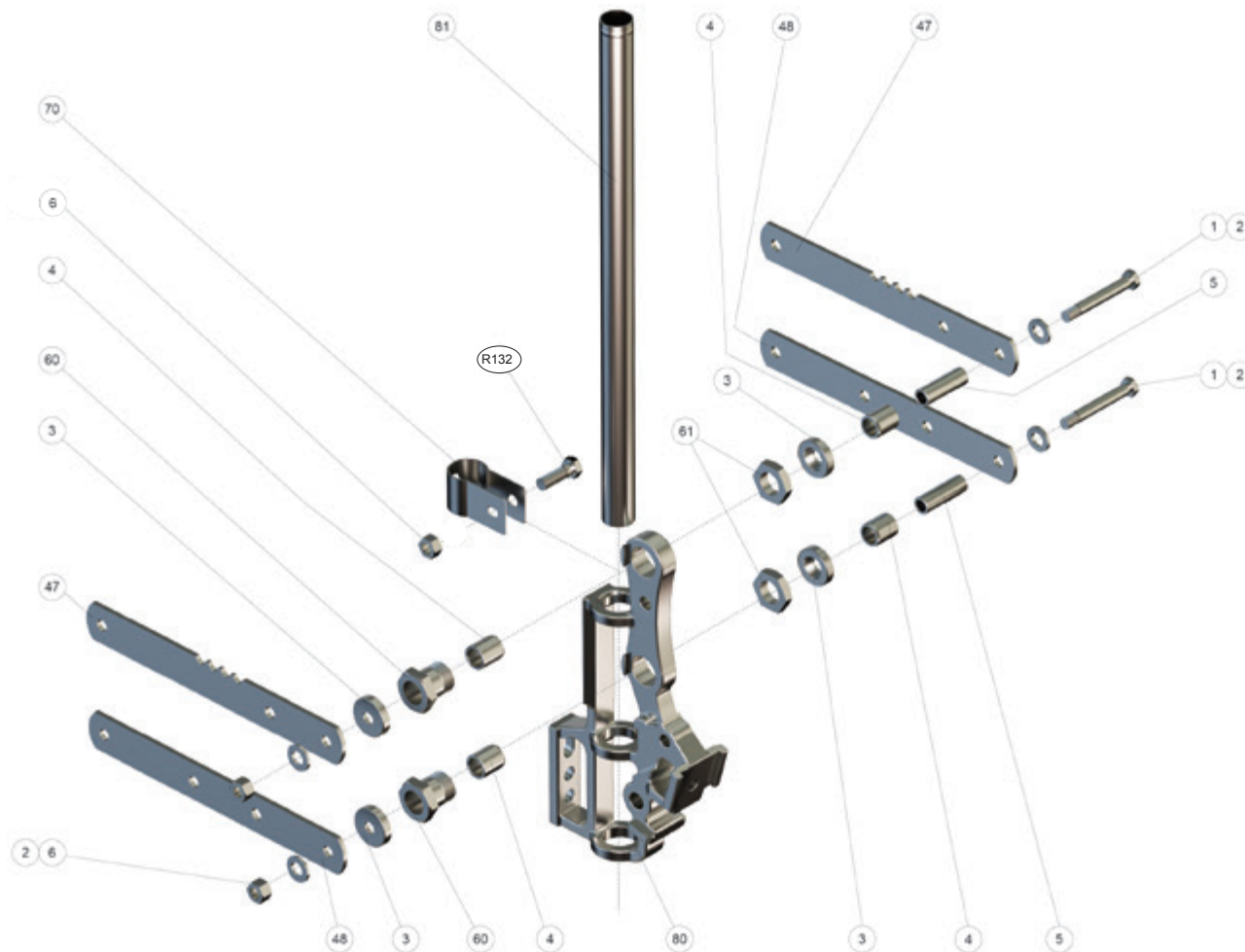
REAR CAST ARM ASSEMBLY
INC 70MM BUILT PRESS WHEEL &
SEEDING TOOLS FOR PRECISION
SEED PLACEMENT

- Four fully bushed, self-lubricating pivot points
- Central spring, four pressure settings
- Stainless seed tube
- 3 press wheel profiles options
- 5 seed tool options
- 4 mud scraper options



REAR CAST ARM ASSEMBLY

QTY	COMPONENT CODE	DESCRIPTION
2	47-ARMUP	SIDE ARM UPPER (LONG)
2	48-ARMLW	SIDE ARM LOWER (LONG)
1	43A-PUSTOPPER	POLY URETHANE STOPPER
2	44-RSPRING	RETAINING SPRING
4	123-SPK	SHANK PIVOT KIT
2	1-M12X90	BOLT M12 X 90 ZP
2	6-M12CONE	NUT M12 CONELOCK
2	2-M12WF	FLAT WASHER M12 ZP HARD
1	7-SP120	SPRING 5.6 X 42 X120
1	42-PSH	PIN SPRING HOLDER
1	136-PWB	BUILT PRESS WHEEL 300MM X 70MM
2	49-PWARM	PRESS WHEEL ARM
1	20-GH32	PLASTIC SEED BOOT - 32 ID
1	24-GH030HD	WEAR SHOE 30MM HD TUNGSTEN
1	19A-5X25	INTERNAL ROLL PIN
1	19-GH010	ROLL PIN
1	21-GH012	WEAR SHOE HOLDER
R132		M12 X 50
1	87-PWBOLT	PRESS WHEEL BOLT
1	88-PWLN	LOCK NUT FOR PW BOLT
1	80-RCA	REAR CAST ARM
1	81-SST	STAINLESS SEED TUBE RCA
1	70-FTB	BRACKET FOR SEED OR FERT TUBE
1	38A-BOLT	MUD SCRAPER BLT 1/2 X 1 1/4 ZP UNC GRD8

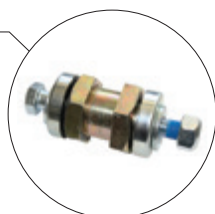


FEATURES

- Uses two bolt holes to attach the closing tool instead of one. The top hole is elongated. This is an improvement on one hole and prevents closing tools becoming loose and being lost in the field.
- Bushes are contained in a bush housing to allow bushes to be removed in the field instead of in the workshop.
- Multiple styles of mud scrapers can be used.
- Reduces the cost to upgrade older machines.

123 - SPK

SHANK PIVOT KIT contains:			
Bush housing	x1	Long Bush	x1
Bush housing nut	x1	Bolt M12 x 90 ZP	x1
Seal Cap	x2	Flat Washer M12 ZP	x2
Short Bush	x2	Nut M12 Conelock	x1



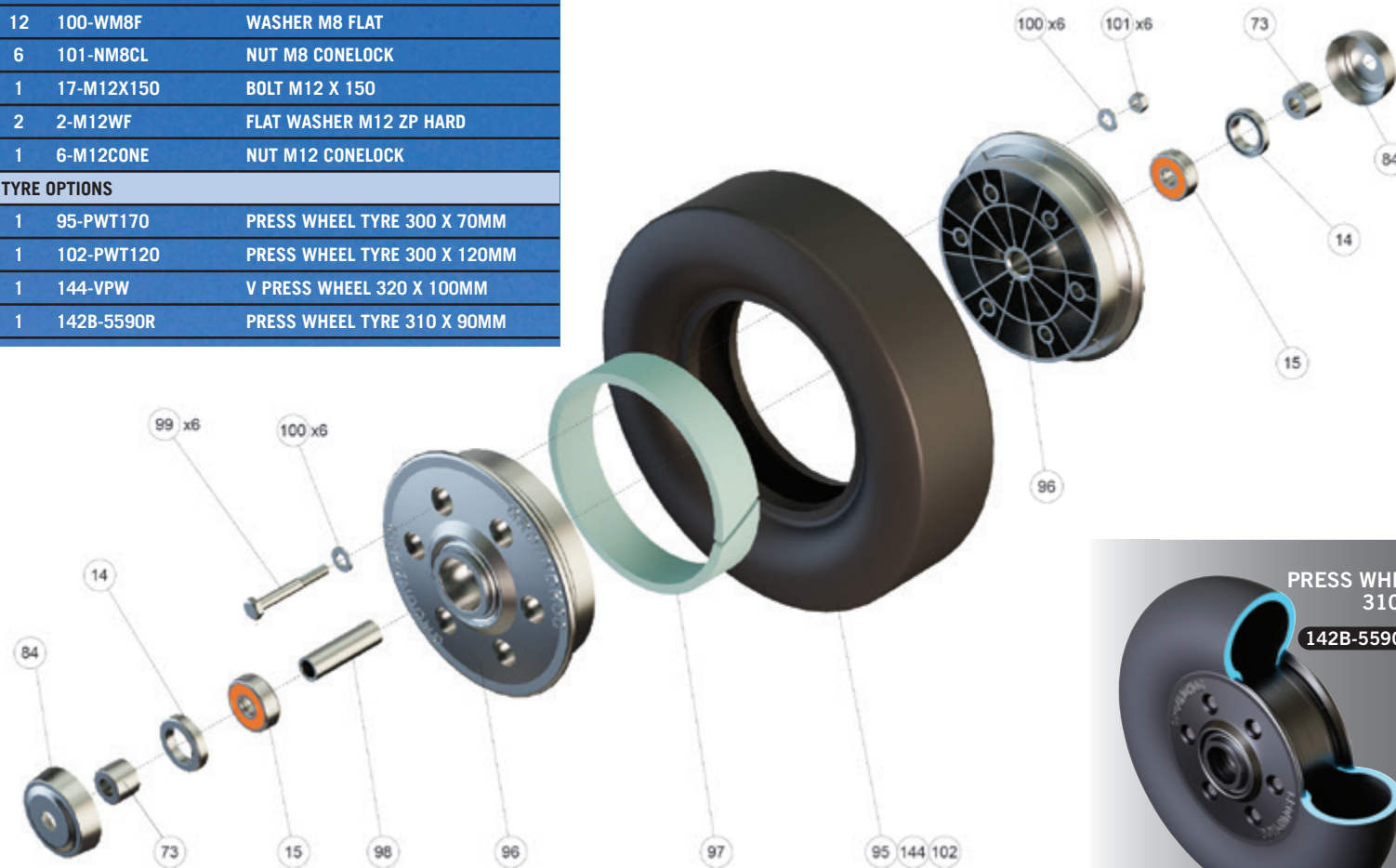
PRESS WHEELS

BUILT PRESS WHEEL COMPONENTS

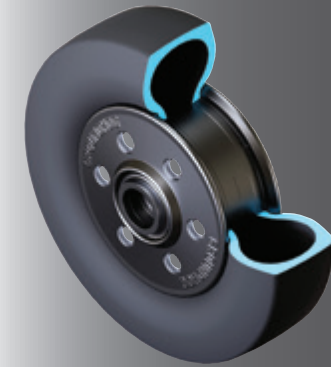
QTY	COMPONENT CODE	DESCRIPTION
2	14-GHPWSEAL	PRESS WHEEL DUST SEAL 37 X 7 X 24
2	15-PWBJ	PRESS WHEEL BEARING
2	73-PWS	PRESSWHEEL SPACER (EXTERNAL)
2	84-PWBC1	PRESS WHEEL BEARING COVER
2	96-PWH	PRESS WHEEL HUB
1	97-RR	RETAINING RING
1	98-IPWS	INTERNAL PRESS WHEEL SPACER
6	99-BM8X60	BOLT M8X60MM
12	100-WM8F	WASHER M8 FLAT
6	101-NM8CL	NUT M8 CONELOCK
1	17-M12X150	BOLT M12 X 150
2	2-M12WF	FLAT WASHER M12 ZP HARD
1	6-M12CONE	NUT M12 CONELOCK
TYRE OPTIONS		
1	95-PWT170	PRESS WHEEL TYRE 300 X 70MM
1	102-PWT120	PRESS WHEEL TYRE 300 X 120MM
1	144-VPW	V PRESS WHEEL 320 X 100MM
1	142B-5590R	PRESS WHEEL TYRE 310 X 90MM

FEATURES

- Multiple profiles available to suit your soil and crops.
- Heavy duty rubber tyres that can withstand harsh environments.



PRESS WHEEL PROFILES



SQUARE
PRESS WHEEL TYRE
300 X 70MM

95-PWT170 **95**

BUILT PRESS WHEEL
300 X 70MM

136-PWB **136**



ROUND
PRESS WHEEL TYRE
300 X 120MM

102-PWT120 **102**

BUILT PRESS WHEEL
300 X 120MM

136A-BPW120 **136A**



ROUND
PRESS WHEEL TYRE
310 X 90MM

142B-5590R **142B**

BUILT ROUND
PRESS WHEEL
310 X 90MM

136C-BPW90R **136C**



V PRESS WHEEL TYRE
320 X 100MM

144-VPW **144**

BUILT V PRESS WHEEL
320 X 100MM

136B-BPW90V **136B**

PARTS & ACCESSORIES



BOLT M12 X 90 Z
1-M12X90

1



SEAL CAP ZP HOUSING DUST SEAL
3-GHSEAL

3

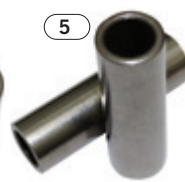
4



SHORT BUSH SINTERED OIL IMPG.
4-GHSB

4

5



LONG BUSH SINTERED OIL IMPG.
5-GHLB

5



SPRING 5.6 X 42 X120
7-SP120

7



CLEVIS PIN
9-GH005
SPLIT PIN BAG OF 50
10-GHSPIN

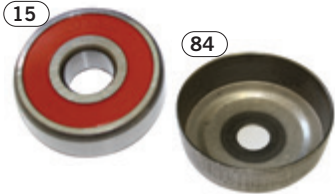
9

10



PRESS WHEEL DUST SEAL 37X7X24
14-GHPWSEAL

14



PRESS WHEEL BEARING
15-PWBJ
PRESS WHEEL BEARING COVER
84-PWBC1

15

84



PLASTIC SEED BOOT - 32 ID
20-GH32
PLASTIC SEED BOOT - 42 ID
20A-GH42

20

20A



HOSE CLAMP 25-40
29-GH44
HOSE CLAMP 30-45
29A-GH51

29

29A



PIN SPRING HOLDER
42-PSH

42



POLY URETHANE STOPPER
43A-PUSTOPPER

43A



RETAINING SPRING
44-RSPRING

44



SPRING
45-SSPRING

45



MUD SCRAPER 70MM S2 TINE
46A-70SCRAPERV2
MUD SCRAPER 90MM S3 TINE
46B-90SCRAPERV3
MUD SCRAPER 70MM S3 TINE
46-70SCRAPERV3

46A

46B

46



SIDE ARM UPPER (LONG)
47-ARMUP
SIDE ARM LOWER (LONG)
48-ARMLow

47

48



SIDE ARM UPPER (SHORT)
47A-ARMUPA
SIDE ARM LOWER (SHORT)
48A-ARMLowA

47A

48A



PRESS WHEEL ARM
49-PWARM

49



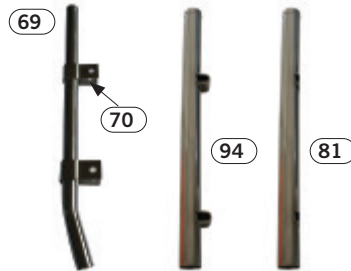
TRASH GUARD INCLUDES HARDWARE
51-GHTRASH

51

PARTS & ACCESSORIES



BUSH HOUSING
60-BHOUSING (60)
BUSH HOUSING NUT
61-BHN (61)



GRANULAR FERT TUBE
69-GFT (69)
FERT TUBE BRACKET
70-FTB (70)
STAINLESS SEED TUBE S3
94-SSTV3 (94)
STAINLESS SEED TUBE RCA
81-SST (81)



WEAR SHOE HOLDER CHAIN
72-WSHC (72)



ROLL PIN
19-GH010 (19)
INTERNAL ROLL PIN
19A-5X25 (19A)



SEED TUBE SPRING
130-ST (130)



PRESSWHEEL SPACER
73-PWS (73)



AIR SEEDER HOSE 127MM X 1MTR
74-ASH 127 X 1 (74)
AIR SEEDER HOSE 63MM X 20MTR
75-ASH 63 X 20 (75)
AIR SEEDER HOSE 32MM X 20MTR
76-ASH 32 X 20 (76)



PRESSWHEEL TYRE 300 X 70MM
95-PWT70 (95)



PRESS WHEEL TYRE 300 X 120MM
102-PWT120 (102)



PRESS WHEEL TYRE 320 X 100MM
144-VPW (144)



PRESS WHEEL TYRE 310 X 90MM
152-PWT90 (152)



RCLIP
0091C RCLIP (0091C)



PIN 25 X 64 SHANK PIVOT
119-P25X64 (119)
PIN 25X75 JUMP CYLINDER
122-PJC25X75 (122)
PIN - JUMP CYL BASE
115-PJCB (115)
PIN SHANK PIVOT
116-PSB (116)



PRESS WHEEL HUB
96-PWH (96)
INTERNAL PRESSWHEEL SPACER
98-IPWS (98)



PLASTIC SLEEVE VERSION 3
103-PSV3 (103)
PLASTIC SLEEVE VERSION 2
104-PSV2 (104)



HYDRAULIC RAM
106-HR70 (106)



SEAL KIT HYDRAULIC RAM 70MM STROKE
106A-SK70R (106A)



BUSH ASSY - SHANK PIVOT
108-BASP (108)



OPAQUE AIR SEEDER HOSE 320D,
38ID X 30 MTR

78-OASH30 78

OPAQUE AIR SEEDER HOSE 32 OD,
38ID X 100MTR

79-OASH100 79



COULTER DISK - 18" FLAT 6 HOLE

126-CD18 126



COULTER DISK - 18" FLAT 5 HOLE

124-CD18X5 124



COULTER DISC - 18" RIPPLED 5 HOLE

127-CDR18X5 127



VALVE CUSHION RETURN

118-VCR 118



BUSH HYDRAULIC RAM

129-BSN 129



ELBOW

148 - ELBOW 148



SHANK PIVOT KIT

123-SPK 123



PIVOT KIT BOLT SET

131-PKBS 131



TEE

149 - TEE 149



HYD HOSE 3/8 X 1.55M - 3/4

145-HAE1550 145

HYD HOSE 3/8 X 0.9M - 3/4

146-HAE900 146

HYD HOSE 3/8 X 1.4M - 3/4

147-HAE1400 147

SEEDING BAR COMPONENTS

DESCRIPTION	ITEM #	PRODUCT CODE	PART DESCRIPTION
80-8 COMPLETE STUD AXLE	199	199-8 STUD AXLE	80-8 STUB ASSLY 8/275 233 80SQ
80-8 HUB COMPONENTS	201	201-SSTUB	80 SERIES STUB 385 80SQ S1045
	202	202-SEAL	"SEAL 125 X 90 X 12 70 & 80 SERIES"
	203	203-80SB	"80 SERIES BEARING 30214 SKF (70X125X26.25)"
	204	204-80SB	"80 SERIES BEARING 30210 SKF (50X90X21.75)"
	205	205-PSZ	PIN SPLIT M6 X 60 ZINC
	206	206-M8X30	"M8 X 30 SHCS T/S 70 & 80 SERIES"
	207	207-M8WZ	M8 WASHER LOCK RIB ZINC
	208	208-NSM39	"NUT SLOTTED M39 X 2 T/S 75 & 80 SERIES"
	209	209-WRS	"WEAR RING 70 & 80 SERIES T/S SEAL 125 X 90 X 12"
	210	210-SR	"SEAL RING 80 SERIES 70.5 X 90.5 X 95 X 16.5"
	211	211-WSM18	WHEEL STUD M18 X 1.5 X 65
	212	212-HUBD	80-8 HUB M/C & DRILLED 8/275
	213	213-DCAP	"DUST CAP 70/80 SERIES BOLT ON M/C (3 SCREW)"
	214	214-WNM18	"WHEEL NUT M18 X 1.5 SPHERICAL R16"
WHEEL	215	215-WHEELGB	SEEDING BAR WHEEL 22.5 -11.75 GLOSS BLACK
TYRE	216	216-MTL16	SEEDING BAR TYRES - 385/65-22.5
FLOTATION TYRE	217	217-MTL18	SEEDING BAR FLOTATION TYRES 400/60-22



WA DEALERS

ALBANY
McIntosh & Son
Phone: (08) 9847 4255

ESPERANCE
McIntosh & Son
Phone: (08) 9071 1155

GERALDTON
McIntosh & Son
Phone: (08) 9960 5500

KATANNING
McIntosh & Son
Phone: (08) 9821 7000

CUNDERDIN
McIntosh & Son
Ph: (08) 96351003

NARROGIN
McIntosh & Son
Phone: (08) 9881 2222

KULIN
McIntosh & Son
Phone: (08) 9880 2556

MERREDIN
McIntosh & Son
Phone: (08) 9041 1099

MOORA
McIntosh & Son
Phone: (08) 9651 1488

WONGAN HILLS
McIntosh & Son
Phone: (08) 9671 1300

CUNDERDIN
McIntosh & Son
Phone: (08) 9635 1003

SA DEALERS

CUMMINS
Curtis's
Phone: (08) 8676 2117

TUMBY BAY
Curtis's
Phone: (08) 8688 2119

WUDINNA
Curtis's
Phone: (08) 86 802 161

BORDERTOWN
O'Connors
Phone: (08) 8752 1311

SADDLEWORTH
Vater Machinery
Phone: (08) 8847 5000

NSW DEALERS

COWRA
Beulah Machinery
Phone: (02) 6341 3270

COROWA
O'Connors
Phone: (02) 6033 1666

CONDOBOLIN
O'Connors
Phone: (02) 6895 2622

WEST WYALONG
O'Connors
Phone: (02) 6972 2288

FORBES
O'Connors
Phone: (02) 6852 1200

GRENFELL
O'Connors
Phone: (02) 6343 1422

VIC DEALERS

YARRAWONGA
McBurnie Group
Phone: (03) 5744 1111

BIRCHIP
O'Connors
Phone: (03) 5492 2311

HORSHAM
O'Connors
Phone: (03) 5382 1727

WARRACKNABEAL
O'Connors
Phone: (03) 5398 1877

SHEPPARTON
O'Connors
Phone: (03) 5821 4555

BALLARAT
O'Connors
Phone: (03) 5339 3038

ECHUCA
O'Connors
Phone: (03) 5482 1733

SWAN HILL
O'Connors
Phone: (03) 5032 0099

MILDURA
O'Connors
Phone: (03) 5039 5349



RAISING THE BAR

FOR SALES CONTACT:

TEL: 08 9337 7919

UNIT 1/22 SPHINX WAY BIBRA LAKE WA 6163

EMAIL: SALES@GROUNDHOG.COM.AU

f t WWW.GROUNDHOG.COM.AU

THERE IS NO RELATIONSHIP BETWEEN GROUNDHOG INDUSTRIES AND AUSPLOW PTY LTD.

AUSPLOW PTY LTD HAS NOT APPROVED THE USE OF GROUNDHOG INDUSTRIES PARTS ON ITS MACHINERY.

WARRANTY INFORMATION

As the selection, set-up and use of tillage and seeding equipment is affected by variables beyond our control, neither the Manufacturer nor any persons employed on its behalf including dealers or agents are liable for any loss or damage, whether consequential or otherwise, resulting from the use of its products. Warranty may / may not apply where any product is used for other than its intended and recommended purpose, or is subjected to pressures, loads or conditions beyond that for which it is designed. Should a product not perform its intended or recommended function, contact Groundhog Industries.